

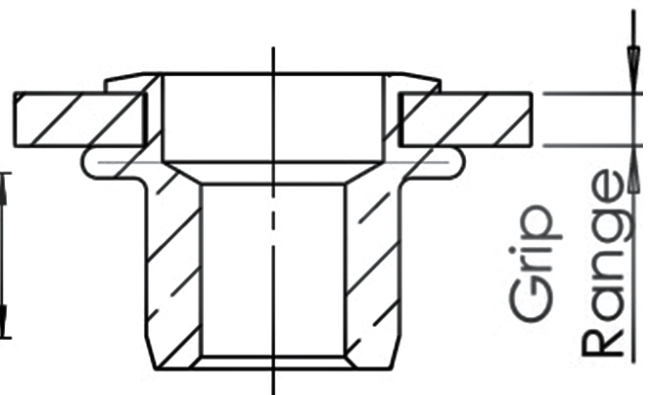
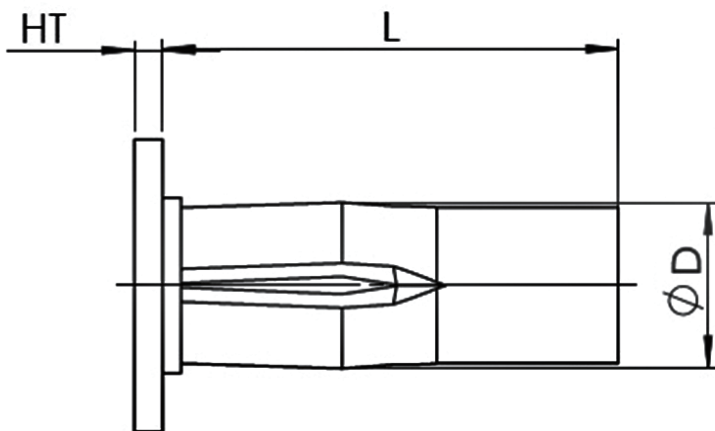
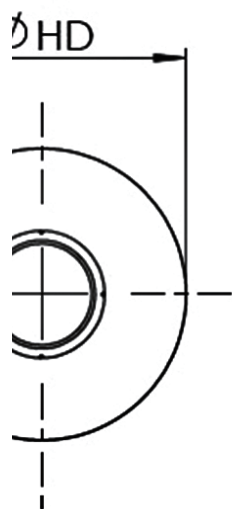


JUNHAI

JR

CATALOG

JUNHAI®
BLIND RIVET NUT



Company Info and Capabilities	4 - 5
Blind Threaded Inserts and Studs Overview	6
Application	7 - 9
Design Guides	10 - 11

JR-SPIN TYPE

	JRL	JUNHAI® LARGE FLANGE KNURLED BODY RIVET NUT	12 - 13
	JRK	JUNHAI® SMALL FLANGE KNURLED BODY RIVET NUT	14 - 15
	JRH	JUNHAI® LARGE FLANGE SEMI HEX BODY RIVET NUT	16 - 17
	JRO	JUNHAI® THIN FLANGE ROUND BODY RIVET NUT	18

JR-MT TYPE

	JRFK	JUNHAI® FLAT FLANGE KNURLED BODY RIVET NUT	19
	JRTK	JUNHAI® THIN FLANGE KNURLED BODY RIVET NUT	20
	JRFH	JUNHAI® FLAT FLANGE SEMI HEX BODY RIVET NUT	21
	JRTH	JUNHAI® THIN FLANGE SEMI HEX BODY RIVET NUT	22
	JRFHH	JUNHAI® FLAT FLANGE HEX BODY RIVET NUT	23
	JRTHH	JUNHAI® THIN FLANGE HEX BODY RIVET NUT	24
	JRCK	JUNHAI® COUNTERSUNK FLANGE KNURLED BODY RIVET NUT	25

JR-SLOTTED TYPE



JRPN

JUNHAI® LARGE FLANGE STRAIGHT SLOTTED BODY RIVET NUT

26



JRPB

JUNHAI® LARGE FLANGE PREBULBED SLOTTED BODY RIVET NUT

27

JR Compare With Other Brands

28

Part Number Keys

29

Installation Tools

30 - 31



COMPANY



JUNHAI is very proud of providing its diversity of rivet nuts and special fasteners. Customers are always satisfied with our product quality, best price and have confidence in our company management.

With great experience in development, manufacturing and sale of high-quality fasteners, we can not only provide commercial parts but also customized parts.

We believe our extended employee product application trainings are an indispensable foundation for a successful cooperation with our customers.

CAPABILITIES

Application Engineering Services

We can provide you with application analysis/review, 3D modeling, product samples, on-site training and total engineering support.

Custom Designs

Our engineers can assist you in finding the most efficient solution to your application, and design the right fastener to meet your needs.

Installation Tools

We can assess your application and recommend equipment that helps you to address challenging component handling and fastener installation.



Products Development

We are equipped with the latest equipment to provide products samples and short run production quantities for your testing and analysis.

Technical Lab

We have comprehensive testing facilities in each of our manufacturing locations. Our trained technicians can perform testing and provide complete analysis on technology and using of rivet nut.



QUALITY

At JUNHAI, the 100% defect-free product is our main goal. We use analyzing tools throughout our manufacturing processes to monitor the performance and assure effective quality control of each process step.

If a situation occurs that exceeds the standard, we will use of appropriate quality assurance tools to be resolve.

Grip is the thickness of the material being riveted. The grip range is the minimum and maximum grip the rivet is intended to be used with. It is very important to meet the demand of grip range for installation. In order to meet the highest quality demand. We apply **zero grip range** for our rivet nut testing which leads to the great stability so the customers can be satisfied with our best quality.



JR blind rivet nut, a Taiwanese brand leading company with decades of experience and keep developing a wider grip range to accommodate larger panel thicknesses, and stronger spin-out or pull-out loads to withstand a variety of expected loads to fulfill our customers's special requirements.

There are three types : JR-Spin Types, JR-MT Types, and JR-Slotted Types rivet nuts.

JR-Spin Types :

- High tensile
- High torque
- High shear
- Wide grip range in varied applications

JR-MT Types :

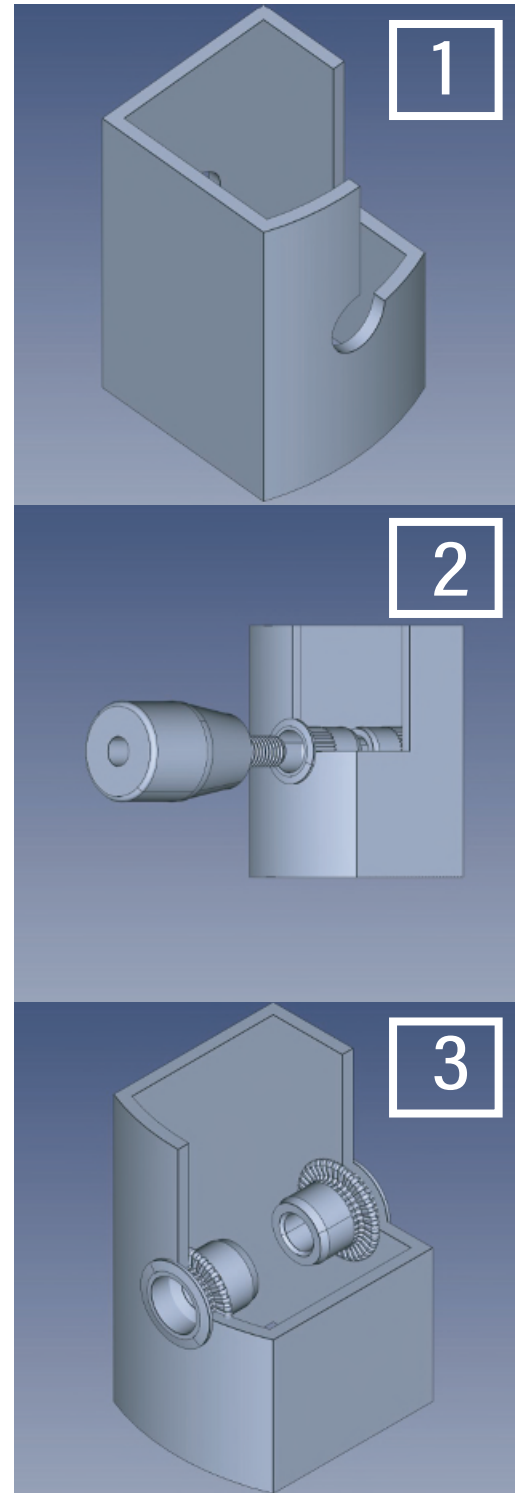
- European design for metric thread sizes
- Compatible with spin-pull tooling

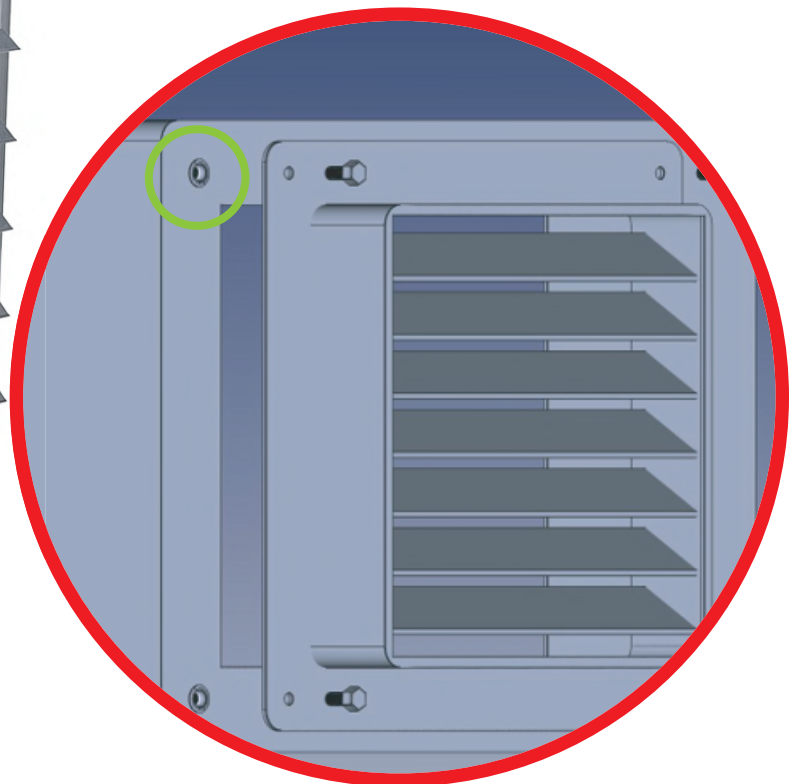
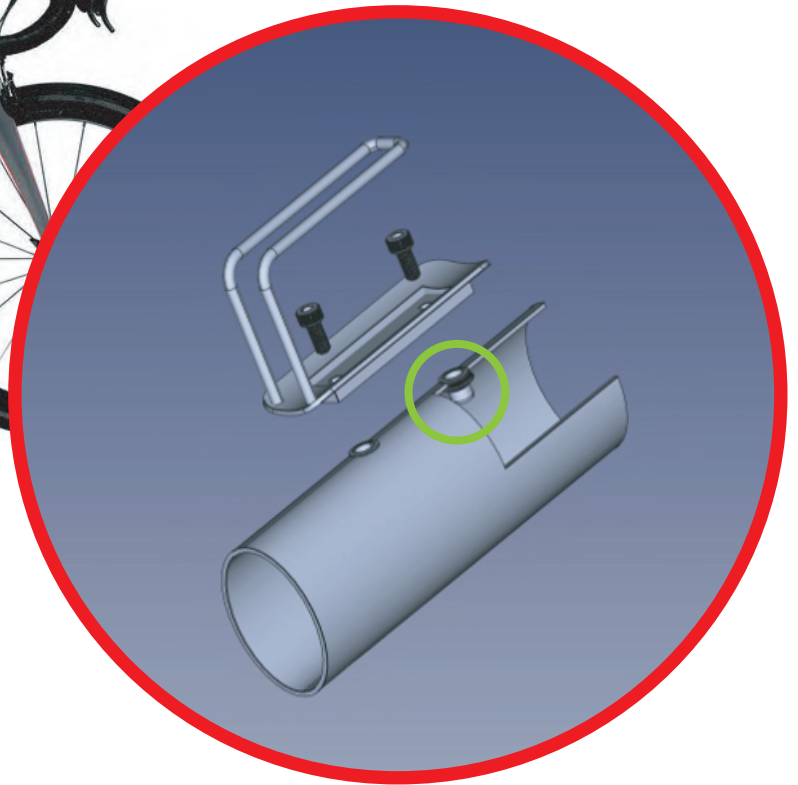
JR-Slotted Types :

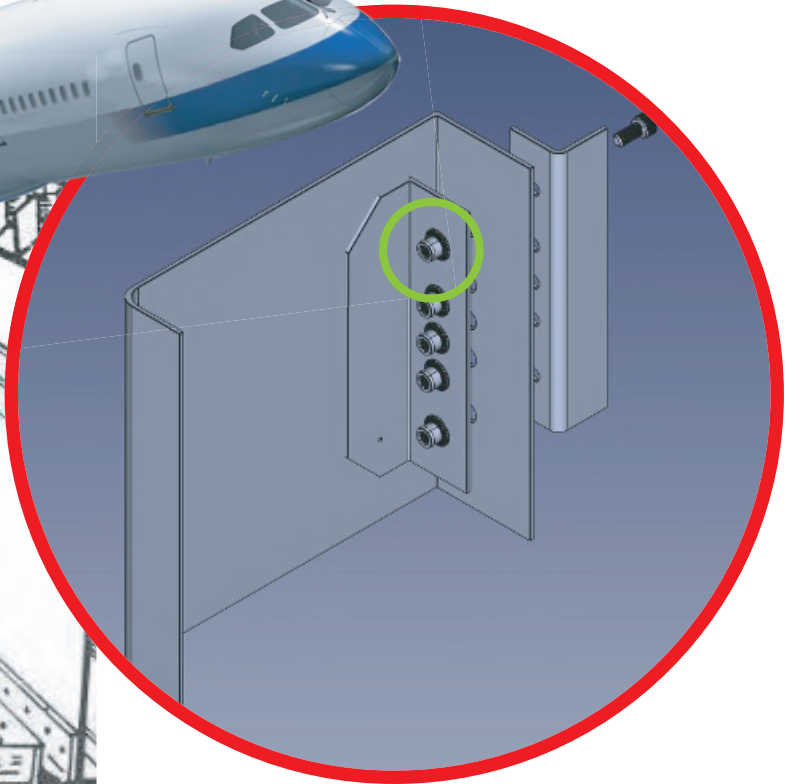
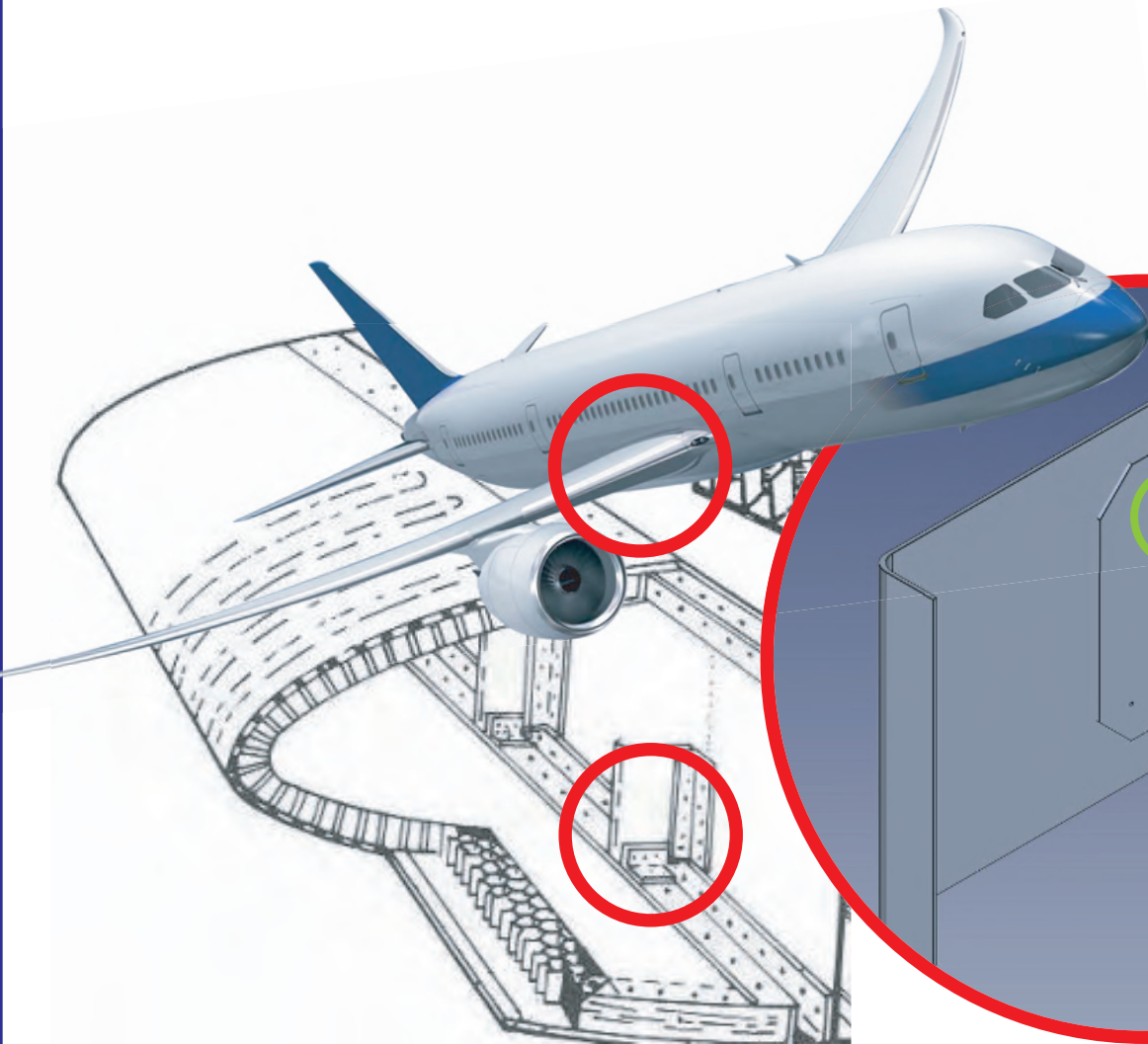
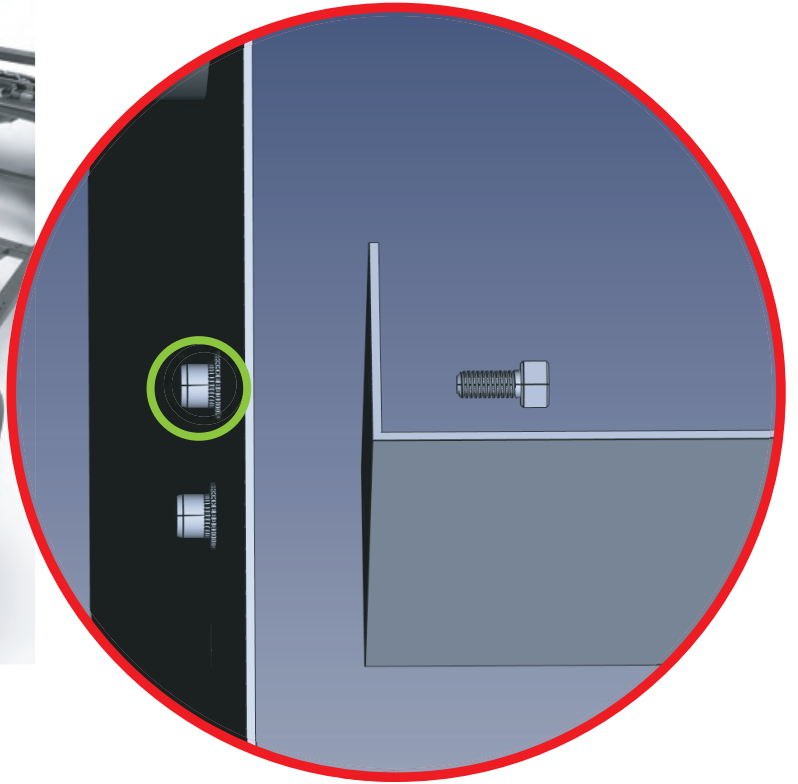
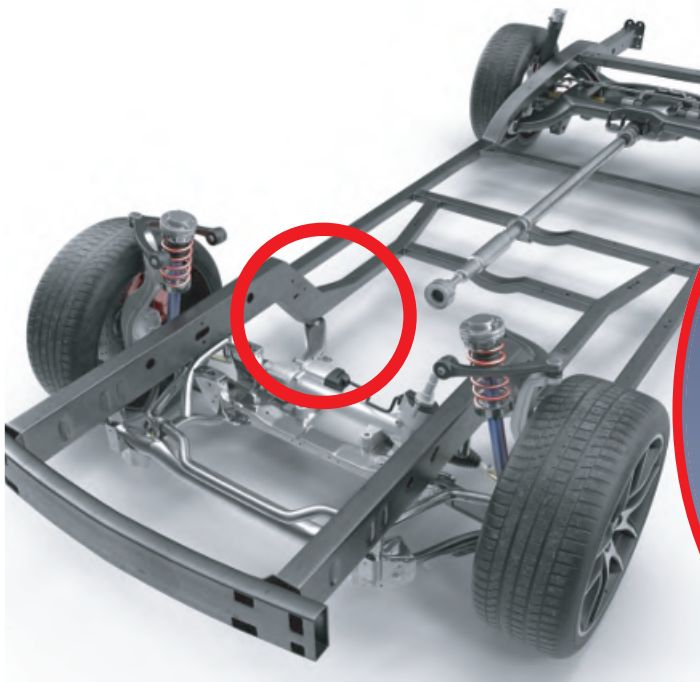
- Lower pull-out loads
- Slotted body for the widest available grip range
- Compatible with spin-spin or spin-pull tooling

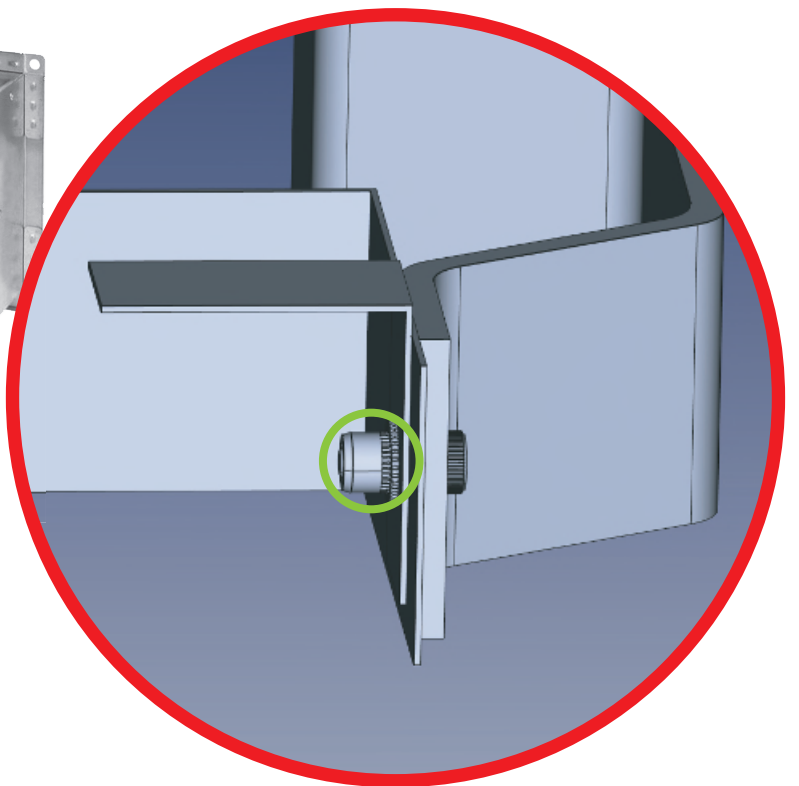
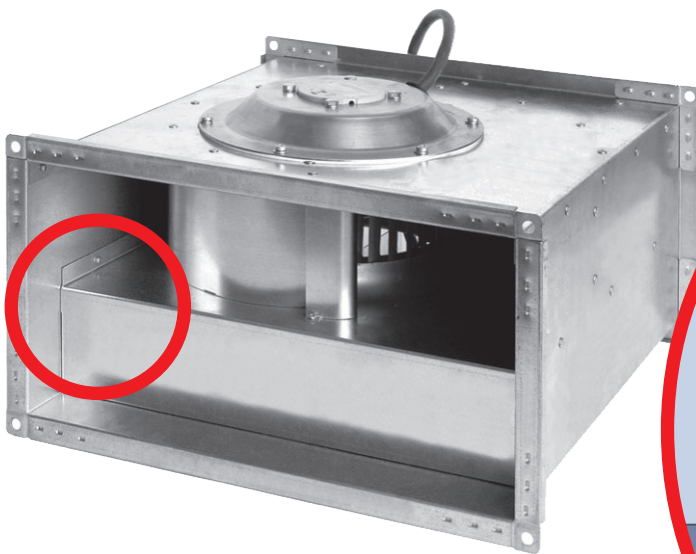
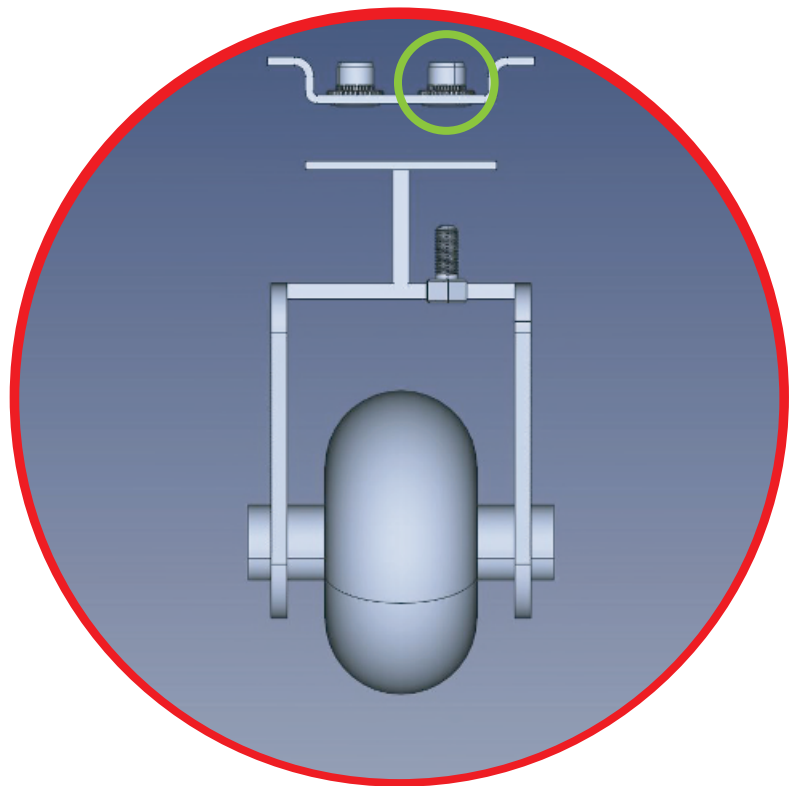
Typical industries that use blind threaded rivet technology :

- Appliances
- Automobiles and accessories
- Aviation and aerospace
- Electronics
- Food service equipment
- Furniture/fixtures/signs
- Industrial equipment
- Lawn and garden equipment
- Lighting
- Marine/boating
- Medical equipment
- Military equipment
- Recreational equipment
- Trucks and trailers









What is the rivet nuts ?

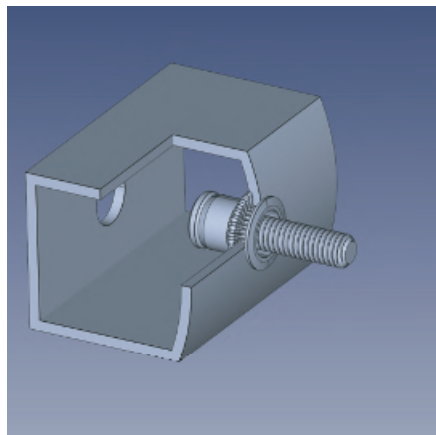
A rivet nut, also known as a blind rivet nut, or rivnut, is a one-piece internally threaded and counterbored tubular rivet that can be anchored entirely from one side, size range from M4-M12.

The original **blind installed internally threaded rivet**, was invented for the purpose of attaching a rubber extrusion to the leading edge of the aircraft wing for military and aerospace markets, then became popular in general industry because of its design and assembly advantages.



Stud

It features a body with a welded-in-place mating stud and can be used as an alternative to weld or clinch studs. It is also useful to support heavy components on a vertical surface before final assembly is made. The material can be varied from steel, aluminum, stainless steel.

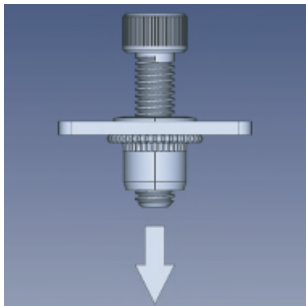




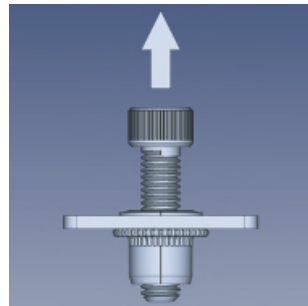
Why choosing JR blind rivet nut ?

Our blind rivet nuts are easy to use with higher tensile and torque strength. The faster installation times can replace traditional bolt and nut, and weld nut applications and ideal for thin sheet applications with wide variety of styles and thread sizes

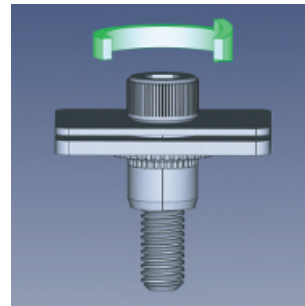
Test Guidelines



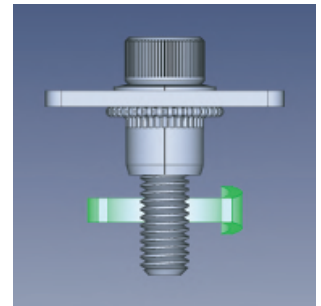
PUSHOUT



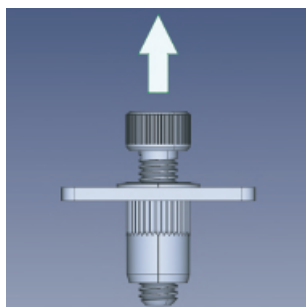
PULLOUT



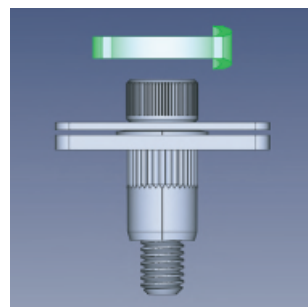
SPINOUT



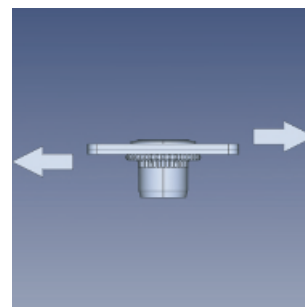
SPIN TO TURN



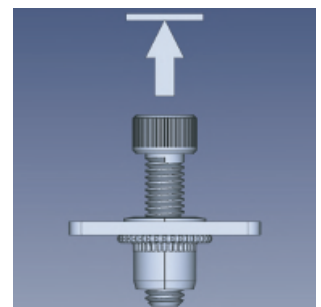
INSTALLATION LOAD



SPIN
INSTALLATION LOAD



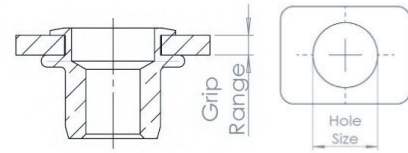
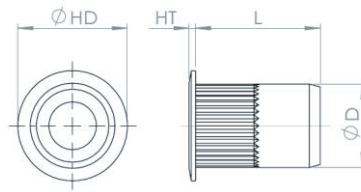
SHEAR



PROOF LOAD



OPEN END



All dimensions are in inches.

Part Number	Thread Size	Thread Call	Grip Range	Grip Call	Hole Size +0.006/0	φHD	HT	L	φD
JRLS4-632-80	#6-32 UNC-2B	632	0.020 ~ 0.080	80	0.266	0.390	0.030	0.420	0.265
JRLS4-632-130	#6-32 UNC-2B	632	0.080 ~ 0.130	130	0.266	0.390	0.030	0.470	0.265
JRLS4-832-80	#8-32 UNC-2B	832	0.020 ~ 0.080	80	0.266	0.390	0.030	0.420	0.265
JRLS4-832-130	#8-32 UNC-2B	832	0.080 ~ 0.130	130	0.266	0.390	0.030	0.470	0.265
JRLS4-1024-130	#10-24 UNC-2B	1024	0.020 ~ 0.130	130	0.297	0.415	0.030	0.475	0.296
JRLS4-1024-225	#10-24 UNC-2B	1024	0.130 ~ 0.225	225	0.297	0.415	0.030	0.585	0.296
JRLS4-1032-130	#10-32 UNF-2B	1032	0.020 ~ 0.130	130	0.297	0.415	0.030	0.475	0.296
JRLS4-1032-225	#10-32 UNF-2B	1032	0.130 ~ 0.225	225	0.297	0.415	0.030	0.585	0.296
JRLS4-420-165	1/4-20 UNC-2B	420	0.027 ~ 0.165	165	0.391	0.500	0.030	0.580	0.390
JRLS4-420-260	1/4-20 UNC-2B	420	0.165 ~ 0.260	260	0.391	0.500	0.030	0.680	0.390
JRLS4-518-150	5/16-18 UNC-2B	518	0.027 ~ 0.150	150	0.531	0.685	0.035	0.690	0.530
JRLS4-518-312	5/16-18 UNC-2B	518	0.150 ~ 0.312	312	0.531	0.685	0.035	0.805	0.530
JRLS4-616-150	3/8-16 UNC-2B	616	0.027 ~ 0.150	150	0.531	0.685	0.035	0.690	0.530
JRLS4-616-312	3/8-16 UNC-2B	616	0.150 ~ 0.312	312	0.531	0.685	0.035	0.805	0.530
JRLS4-813-200	1/2-13 UNC-2B	813	0.063 ~ 0.200	200	0.688	0.865	0.047	1.150	0.685
JRLS4-813-350	1/2-13 UNC-2B	813	0.200 ~ 0.350	350	0.688	0.865	0.047	1.300	0.685

All dimensions are in millimeters.

Part Number	Thread Size	Thread Call	Grip Range	Grip Call	Hole Size +0.10/-0	φHD	HT	L	φD
JRLS4-470-2.0	M4-P0.7-6H	470	0.50 ~ 2.00	2.0	6.75	9.91	0.76	10.67	6.73
JRLS4-470-3.3	M4-P0.7-6H	470	2.00 ~ 3.30	3.3	6.75	9.91	0.76	11.94	6.73
JRLS4-580-3.3	M5-P0.8-6H	580	0.50 ~ 3.30	3.3	7.60	10.54	0.76	12.07	7.52
JRLS4-580-5.7	M5-P0.8-6H	580	3.30 ~ 5.70	5.7	7.60	10.54	0.76	14.86	7.52
JRLS4-610-4.2	M6-P1.0-6H	610	0.70 ~ 4.20	4.2	10.00	12.70	0.76	14.73	9.91
JRLS4-610-6.6	M6-P1.0-6H	610	4.20 ~ 6.60	6.6	10.00	12.70	0.76	17.27	9.91
JRLS4-8125-3.8	M8-P1.25-6H	8125	0.70 ~ 3.80	3.8	13.50	17.40	0.89	17.53	13.46
JRLS4-8125-7.9	M8-P1.25-6H	8125	3.80 ~ 7.90	7.9	13.50	17.40	0.89	20.45	13.46
JRLS4-1015-3.8	M10-P1.5-6H	1015	0.70 ~ 3.80	3.8	13.50	17.40	0.89	17.53	13.46
JRLS4-1015-7.9	M10-P1.5-6H	1015	3.80 ~ 7.90	7.9	13.50	17.40	0.89	20.45	13.46
JRLS4-12175-5.1	M12-P1.75-6H	12175	1.60 ~ 5.10	5.1	17.45	21.97	1.19	29.21	17.40
JRLS4-12175-8.9	M12-P1.75-6H	12175	5.10 ~ 8.90	8.9	17.45	21.97	1.19	33.02	17.40

Finish Code Number

- 1= Plain + Oil
- 2= Passivate
- 3= Cr+3 Zinc Plate Clear 8um + Wax
- 4= Cr+3 Zinc Plate Yellow 8um + Wax WR>96

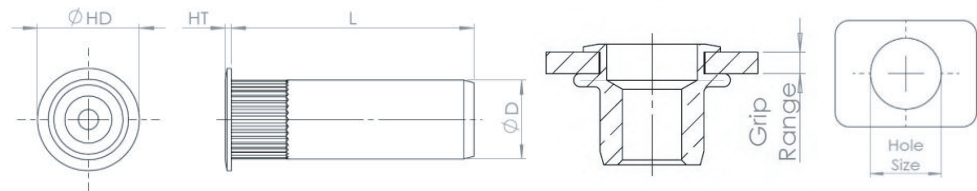
Material Code Number

- A= Aluminum 5056
- B= Brass C260
- C= Stainless Steel 302HQ
- S= Steel C1008

JUNHAI® LARGE FLANGE KNURLED BODY



CLOSED END



All dimensions are in inches.

Part Number	Thread Size	Thread Call	Grip Range	Grip Call	Hole Size +0.006/0	φHD	HT	L	φD
JRLS4-632-80B	#6-32 UNC-2B	632	0.020 ~ 0.080	80	0.266	0.390	0.030	0.755	0.265
JRLS4-632-130B	#6-32 UNC-2B	632	0.080 ~ 0.130	130	0.266	0.390	0.030	0.755	0.265
JRLS4-832-80B	#8-32 UNC-2B	832	0.020 ~ 0.080	80	0.266	0.390	0.030	0.755	0.265
JRLS4-832-130B	#8-32 UNC-2B	832	0.080 ~ 0.130	130	0.266	0.390	0.030	0.755	0.265
JRLS4-1024-130B	#10-24 UNC-2B	1024	0.020 ~ 0.130	130	0.297	0.415	0.030	1.005	0.296
JRLS4-1024-225B	#10-24 UNC-2B	1024	0.130 ~ 0.225	225	0.297	0.415	0.030	1.005	0.296
JRLS4-1032-130B	#10-32 UNF-2B	1032	0.020 ~ 0.130	130	0.297	0.415	0.030	1.005	0.296
JRLS4-1032-225B	#10-32 UNF-2B	1032	0.130 ~ 0.225	225	0.297	0.415	0.030	1.005	0.296
JRLS4-420-165B	1/4-20 UNC-2B	420	0.027 ~ 0.165	165	0.391	0.500	0.030	1.205	0.390
JRLS4-420-260B	1/4-20 UNC-2B	420	0.165 ~ 0.260	260	0.391	0.500	0.030	1.205	0.390
JRLS4-518-150B	5/16-18 UNC-2B	518	0.027 ~ 0.150	150	0.531	0.685	0.035	1.405	0.530
JRLS4-518-312B	5/16-18 UNC-2B	518	0.150 ~ 0.312	312	0.531	0.685	0.035	1.405	0.530
JRLS4-616-150B	3/8-16 UNC-2B	616	0.027 ~ 0.150	150	0.531	0.685	0.035	1.405	0.530
JRLS4-616-312B	3/8-16 UNC-2B	616	0.150 ~ 0.312	312	0.531	0.685	0.035	1.405	0.530

All dimensions are in millimeters.

Part Number	Thread Size	Thread Call	Grip Range	Grip Call	Hole Size +0.10/-0	φHD	HT	L	φD
JRLS4-470-2.0B	M4-P0.7-6H	470	0.50 ~ 2.00	2.0	6.75	9.91	0.76	19.18	6.73
JRLS4-470-3.3B	M4-P0.7-6H	470	2.00 ~ 3.30	3.3	6.75	9.91	0.76	19.18	6.73
JRLS4-580-3.3B	M5-P0.8-6H	580	0.50 ~ 3.30	3.3	7.60	10.54	0.76	25.53	7.52
JRLS4-580-5.7B	M5-P0.8-6H	580	3.30 ~ 5.70	5.7	7.60	10.54	0.76	25.53	7.52
JRLS4-610-4.2B	M6-P1.0-6H	610	0.70 ~ 4.20	4.2	10.00	12.70	0.76	30.61	9.91
JRLS4-610-6.6B	M6-P1.0-6H	610	4.20 ~ 6.60	6.6	10.00	12.70	0.76	30.61	9.91
JRLS4-8125-3.8B	M8-P1.25-6H	8125	0.70 ~ 3.80	3.8	13.50	17.40	0.89	35.69	13.46
JRLS4-8125-7.9B	M8-P1.25-6H	8125	3.80 ~ 7.90	7.9	13.50	17.40	0.89	35.69	13.46
JRLS4-1015-3.8B	M10-P1.5-6H	1015	0.70 ~ 3.80	3.8	13.50	17.40	0.89	35.69	13.46
JRLS4-1015-7.9B	M10-P1.5-6H	1015	3.80 ~ 7.90	7.9	13.50	17.40	0.89	35.69	13.46

Finish Code Number

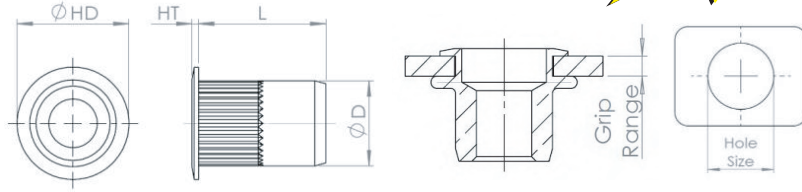
- 1= Plain + Oil
- 2= Passivate
- 3= Cr+3 Zinc Plate Clear 8um + Wax
- 4= Cr+3 Zinc Plate Yellow 8um + Wax WR>96

Material Code Number

- A= Aluminum 5056
- B= Brass C260
- C= Stainless Steel 302HQ
- S= Steel C1008



OPEN END



All dimensions are in inches.

Part Number	Thread Size	Thread Call	Grip Range	Grip Call	Hole Size +0.006/0	φHD	HT	L	φD
JRKS4-632-80	#6-32 UNC-2B	632	0.020 ~ 0.080	80	0.266	0.310	0.019	0.420	0.265
JRKS4-632-130	#6-32 UNC-2B	632	0.080 ~ 0.130	130	0.266	0.310	0.019	0.470	0.265
JRKS4-832-80	#8-32 UNC-2B	832	0.020 ~ 0.080	80	0.266	0.310	0.019	0.420	0.265
JRKS4-832-130	#8-32 UNC-2B	832	0.080 ~ 0.130	130	0.266	0.310	0.019	0.470	0.265
JRKS4-1024-130	#10-24 UNC-2B	1024	0.020 ~ 0.130	130	0.297	0.340	0.019	0.475	0.296
JRKS4-1024-225	#10-24 UNC-2B	1024	0.130 ~ 0.225	225	0.297	0.340	0.019	0.585	0.296
JRKS4-1032-130	#10-32 UNF-2B	1032	0.020 ~ 0.130	130	0.297	0.340	0.019	0.475	0.296
JRKS4-1032-225	#10-32 UNF-2B	1032	0.130 ~ 0.225	225	0.297	0.340	0.019	0.585	0.296
JRKS4-420-165	1/4-20 UNC-2B	420	0.027 ~ 0.165	165	0.391	0.455	0.023	0.580	0.390
JRKS4-420-260	1/4-20 UNC-2B	420	0.165 ~ 0.260	260	0.391	0.455	0.023	0.680	0.390
JRKS4-518-150	5/16-18 UNC-2B	518	0.027 ~ 0.150	150	0.531	0.595	0.023	0.690	0.530
JRKS4-518-312	5/16-18 UNC-2B	518	0.150 ~ 0.312	312	0.531	0.595	0.023	0.805	0.530
JRKS4-616-150	3/8-16 UNC-2B	616	0.027 ~ 0.150	150	0.531	0.595	0.023	0.690	0.530
JRKS4-616-312	3/8-16 UNC-2B	616	0.150 ~ 0.312	312	0.531	0.595	0.023	0.805	0.530

All dimensions are in millimeters.

Part Number	Thread Size	Thread Call	Grip Range	Grip Call	Hole Size +0.10/-0	φHD	HT	L	φD
JRKS4-470-2.0	M4-P0.7-6H	470	0.50 ~ 2.00	2.0	6.75	7.87	0.48	10.67	6.73
JRKS4-470-3.3	M4-P0.7-6H	470	2.00 ~ 3.30	3.3	6.75	7.87	0.48	11.94	6.73
JRKS4-580-3.3	M5-P0.8-6H	580	0.50 ~ 3.30	3.3	7.60	8.64	0.48	12.07	7.52
JRKS4-580-5.7	M5-P0.8-6H	580	3.30 ~ 5.70	5.7	7.60	8.64	0.48	14.86	7.52
JRKS4-610-4.2	M6-P1.0-6H	610	0.70 ~ 4.20	4.2	10.00	11.56	0.58	14.73	9.91
JRKS4-610-6.6	M6-P1.0-6H	610	4.20 ~ 6.60	6.6	10.00	11.56	0.58	17.27	9.91
JRKS4-8125-3.8	M8-P1.25-6H	8125	0.70 ~ 3.80	3.8	13.50	15.11	0.58	17.53	13.46
JRKS4-8125-7.9	M8-P1.25-6H	8125	3.80 ~ 7.90	7.9	13.50	15.11	0.58	20.45	13.46
JRKS4-1015-3.8	M10-P1.5-6H	1015	0.70 ~ 3.80	3.8	13.50	15.11	0.58	17.53	13.46
JRKS4-1015-7.9	M10-P1.5-6H	1015	3.80 ~ 7.90	7.9	13.50	15.11	0.58	20.45	13.46

Finish Code Number

- 1= Plain + Oil
- 2= Passivate
- 3= Cr+3 Zinc Plate Clear 8um + Wax
- 4= Cr+3 Zinc Plate Yellow 8um + Wax WR>96

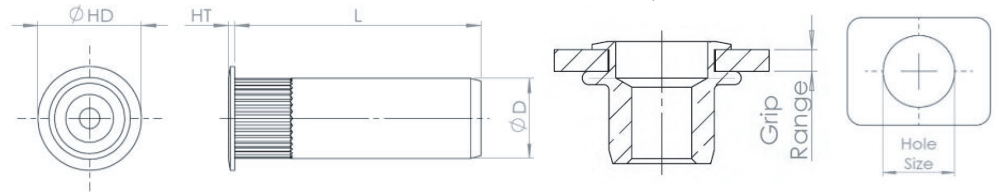
Material Code Number

- A= Aluminum 5056
- B= Brass C260
- C= Stainless Steel 302HQ
- S= Steel C1008

JUNHAI® SMALL FLANGE KUNRLED BODY



CLOSED END



All dimensions are in inches.

Part Number	Thread Size	Thread Call	Grip Range	Grip Call	Hole Size +0.006/0	φHD	HT	L	φD
JRKS4-632-80B	#6-32 UNC-2B	632	0.020 ~ 0.080	80	0.266	0.310	0.019	0.755	0.265
JRKS4-632-130B	#6-32 UNC-2B	632	0.080 ~ 0.130	130	0.266	0.310	0.019	0.755	0.265
JRKS4-832-80B	#8-32 UNC-2B	832	0.020 ~ 0.080	80	0.266	0.310	0.019	0.755	0.265
JRKS4-832-130B	#8-32 UNC-2B	832	0.080 ~ 0.130	130	0.266	0.310	0.019	0.755	0.265
JRKS4-1024-130B	#10-24 UNC-2B	1024	0.020 ~ 0.130	130	0.297	0.340	0.019	1.005	0.296
JRKS4-1024-225B	#10-24 UNC-2B	1024	0.130 ~ 0.225	225	0.297	0.340	0.019	1.005	0.296
JRKS4-1032-130B	#10-32 UNF-2B	1032	0.020 ~ 0.130	130	0.297	0.340	0.019	1.005	0.296
JRKS4-1032-225B	#10-32 UNF-2B	1032	0.130 ~ 0.225	225	0.297	0.340	0.019	1.005	0.296
JRKS4-420-165B	1/4-20 UNC-2B	420	0.027 ~ 0.165	165	0.391	0.455	0.023	1.205	0.390
JRKS4-420-260B	1/4-20 UNC-2B	420	0.165 ~ 0.260	260	0.391	0.455	0.023	1.205	0.390
JRKS4-518-150B	5/16-18 UNC-2B	518	0.027 ~ 0.150	150	0.531	0.595	0.023	1.405	0.530
JRKS4-518-312B	5/16-18 UNC-2B	518	0.150 ~ 0.312	312	0.531	0.595	0.023	1.405	0.530
JRKS4-616-150B	3/8-16 UNC-2B	616	0.027 ~ 0.150	150	0.531	0.595	0.023	1.405	0.530
JRKS4-616-312B	3/8-16 UNC-2B	616	0.150 ~ 0.312	312	0.531	0.595	0.023	1.405	0.530

All dimensions are in millimeters.

Part Number	Thread Size	Thread Call	Grip Range	Grip Call	Hole Size +0.10/-0	φHD	HT	L	φD
JRKS4-470-2.0B	M4-P0.7-6H	470	0.50 ~ 2.00	2.0	6.75	7.87	0.48	19.18	6.73
JRKS4-470-3.3B	M4-P0.7-6H	470	2.00 ~ 3.30	3.3	6.75	7.87	0.48	19.18	6.73
JRKS4-580-3.3B	M5-P0.8-6H	580	0.50 ~ 3.30	3.3	7.60	8.64	0.48	25.53	7.52
JRKS4-580-5.7B	M5-P0.8-6H	580	3.30 ~ 5.70	5.7	7.60	8.64	0.48	25.53	7.52
JRKS4-610-4.2B	M6-P1.0-6H	610	0.70 ~ 4.20	4.2	10.00	11.56	0.58	30.61	9.91
JRKS4-610-6.6B	M6-P1.0-6H	610	4.20 ~ 6.60	6.6	10.00	11.56	0.58	30.61	9.91
JRKS4-8125-3.8B	M8-P1.25-6H	8125	0.70 ~ 3.80	3.8	13.50	15.11	0.58	35.69	13.46
JRKS4-8125-7.9B	M8-P1.25-6H	8125	3.80 ~ 7.90	7.9	13.50	15.11	0.58	35.69	13.46
JRKS4-1015-3.8B	M10-P1.5-6H	1015	0.70 ~ 3.80	3.8	13.50	15.11	0.58	35.69	13.46
JRKS4-1015-7.9B	M10-P1.5-6H	1015	3.80 ~ 7.90	7.9	13.50	15.11	0.58	35.69	13.46

Finish Code Number

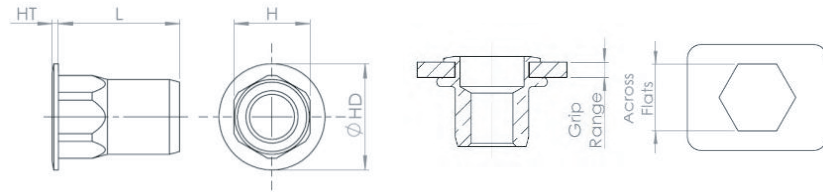
- 1= Plain + Oil
- 2= Passivate
- 3= Cr+3 Zinc Plate Clear 8um + Wax
- 4= Cr+3 Zinc Plate Yellow 8um + Wax WR>96

Material Code Number

- A= Aluminum 5056
- B= Brass C260
- C= Stainless Steel 302HQ
- S= Steel C1008



OPEN END



available
Aluminum
Stainless Steel

All dimensions are in inches.

Part Number	Thread Size	Thread Call	Grip Range	Grip Call	Across Flats +0.006/0	φHD	HT	L	H
JRHS4-632-80	#6-32 UNC-2B	632	0.020 ~ 0.080	80	0.250	0.375	0.027	0.385	0.249
JRHS4-632-130	#6-32 UNC-2B	632	0.080 ~ 0.130	130	0.250	0.375	0.027	0.435	0.249
JRHS4-832-80	#8-32 UNC-2B	832	0.020 ~ 0.080	80	0.250	0.375	0.027	0.385	0.249
JRHS4-832-130	#8-32 UNC-2B	832	0.080 ~ 0.130	130	0.250	0.375	0.027	0.435	0.249
JRHS4-1024-130	#10-24 UNC-2B	1024	0.020 ~ 0.130	130	0.281	0.390	0.027	0.435	0.280
JRHS4-1024-225	#10-24 UNC-2B	1024	0.130 ~ 0.225	225	0.281	0.390	0.027	0.535	0.280
JRHS4-1032-130	#10-32 UNF-2B	1032	0.020 ~ 0.130	130	0.281	0.390	0.027	0.435	0.280
JRHS4-1032-225	#10-32 UNF-2B	1032	0.130 ~ 0.225	225	0.281	0.390	0.027	0.535	0.280
JRHS4-420-165	1/4-20 UNC-2B	420	0.027 ~ 0.165	165	0.375	0.510	0.030	0.585	0.374
JRHS4-420-260	1/4-20 UNC-2B	420	0.165 ~ 0.260	260	0.375	0.510	0.030	0.685	0.374
JRHS4-518-150	5/16-18 UNC-2B	518	0.027 ~ 0.150	150	0.500	0.655	0.035	0.685	0.499
JRHS4-518-312	5/16-18 UNC-2B	518	0.150 ~ 0.312	312	0.500	0.655	0.035	0.845	0.499
JRHS4-616-150	3/8-16 UNC-2B	616	0.027 ~ 0.150	150	0.500	0.655	0.035	0.685	0.499
JRHS4-616-312	3/8-16 UNC-2B	616	0.150 ~ 0.312	312	0.500	0.655	0.035	0.845	0.499
JRHS4-813-200	1/2-13 UNC-2B	813	0.063 ~ 0.200	200	0.687	0.865	0.047	1.150	0.686
JRHS4-813-350	1/2-13 UNC-2B	813	0.200 ~ 0.350	350	0.687	0.865	0.047	1.300	0.686

All dimensions are in millimeters.

Part Number	Thread Size	Thread Call	Grip Range	Grip Call	Across Flats +0.10/-0	φHD	HT	L	H
JRHS4-470-2.0	M4-P0.7-6H	470	0.50 ~ 2.00	2.0	6.35	9.53	0.68	9.78	6.35
JRHS4-470-3.3	M4-P0.7-6H	470	2.00 ~ 3.30	3.3	6.35	9.53	0.68	11.05	6.35
JRHS4-580-3.3	M5-P0.8-6H	580	0.50 ~ 3.30	3.3	7.14	9.91	0.68	11.05	7.10
JRHS4-580-5.7	M5-P0.8-6H	580	3.30 ~ 5.70	5.7	7.14	9.91	0.68	13.59	7.10
JRHS4-610-4.2	M6-P1.0-6H	610	0.70 ~ 4.20	4.2	9.53	12.96	0.76	14.86	9.50
JRHS4-610-6.6	M6-P1.0-6H	610	4.20 ~ 6.60	6.6	9.53	12.96	0.76	17.40	9.50
JRHS4-8125-3.8	M8-P1.25-6H	8125	0.70 ~ 3.80	3.8	12.70	16.64	0.89	17.40	12.70
JRHS4-8125-7.9	M8-P1.25-6H	8125	3.80 ~ 7.90	7.9	12.70	16.64	0.89	21.46	12.70
JRHS4-1015-3.8	M10-P1.5-6H	1015	0.70 ~ 3.80	3.8	12.70	16.64	0.89	17.40	12.70
JRHS4-1015-7.9	M10-P1.5-6H	1015	3.80 ~ 7.90	7.9	12.70	16.64	0.89	21.46	12.70
JRHS4-12175-5.1	M12-P1.75-6H	12175	1.60 ~ 5.10	5.1	17.45	21.97	1.19	29.21	17.42
JRHS4-12175-8.9	M12-P1.75-6H	12175	5.10 ~ 8.90	8.9	17.45	21.97	1.19	33.02	17.42

Finish Code Number

- 1= Plain + Oil
- 2= Passivate
- 3= Cr+3 Zinc Plate Clear 8um + Wax
- 4= Cr+3 Zinc Plate Yellow 8um + Wax WR>96

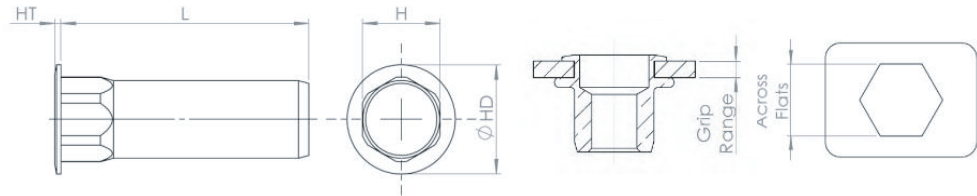
Material Code Number

- A= Aluminum 5056
- B= Brass C260
- C= Stainless Steel 302HQ
- S= Steel C1008

JUNHAI® LARGE FLANGE SEMI HEX BODY



CLOSED END



available
Aluminum
Stainless Steel

All dimensions are in inches.

Part Number	Thread Size	Thread Call	Grip Range	Grip Call	Across Flats +0.006/0	φHD	HT	L	H
JRHS4-632-80B	#6-32 UNC-2B	632	0.020 ~ 0.080	80	0.250	0.375	0.027	0.755	0.249
JRHS4-632-130B	#6-32 UNC-2B	632	0.080 ~ 0.130	130	0.250	0.375	0.027	0.755	0.249
JRHS4-832-80B	#8-32 UNC-2B	832	0.020 ~ 0.080	80	0.250	0.375	0.027	0.755	0.249
JRHS4-832-130B	#8-32 UNC-2B	832	0.080 ~ 0.130	130	0.250	0.375	0.027	0.755	0.249
JRHS4-1024-130B	#10-24 UNC-2B	1024	0.020 ~ 0.130	130	0.281	0.390	0.027	1.045	0.280
JRHS4-1024-225B	#10-24 UNC-2B	1024	0.130 ~ 0.225	225	0.281	0.390	0.027	1.045	0.280
JRHS4-1032-130B	#10-32 UNF-2B	1032	0.020 ~ 0.130	130	0.281	0.390	0.027	1.045	0.280
JRHS4-1032-225B	#10-32 UNF-2B	1032	0.130 ~ 0.225	225	0.281	0.390	0.027	1.045	0.280
JRHS4-420-165B	1/4-20 UNC-2B	420	0.027 ~ 0.165	165	0.375	0.510	0.030	1.205	0.374
JRHS4-420-260B	1/4-20 UNC-2B	420	0.165 ~ 0.260	260	0.375	0.510	0.030	1.205	0.374
JRHS4-518-150B	5/16-18 UNC-2B	518	0.027 ~ 0.150	150	0.500	0.655	0.035	1.460	0.499
JRHS4-518-312B	5/16-18 UNC-2B	518	0.150 ~ 0.312	312	0.500	0.655	0.035	1.460	0.499
JRHS4-616-150B	3/8-16 UNC-2B	616	0.027 ~ 0.150	150	0.500	0.655	0.035	1.460	0.499
JRHS4-616-312B	3/8-16 UNC-2B	616	0.150 ~ 0.312	312	0.500	0.655	0.035	1.460	0.499

All dimensions are in millimeters.

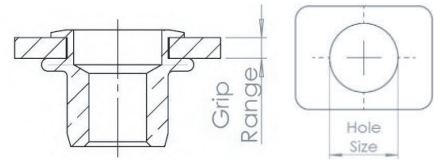
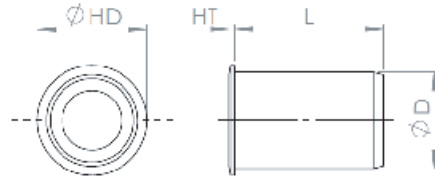
Part Number	Thread Size	Thread Call	Grip Range	Grip Call	Across Flats +0.10/-0	φHD	HT	L	H
JRHS4-470-2.0B	M4-P0.7-6H	470	0.50 ~ 2.00	2.0	6.35	9.53	0.68	19.18	6.35
JRHS4-470-3.3B	M4-P0.7-6H	470	2.00 ~ 3.30	3.3	6.35	9.53	0.68	19.18	6.35
JRHS4-580-3.3B	M5-P0.8-6H	580	0.50 ~ 3.30	3.3	7.14	9.91	0.68	26.54	7.10
JRHS4-580-5.7B	M5-P0.8-6H	580	3.30 ~ 5.70	5.7	7.14	9.91	0.68	26.54	7.10
JRHS4-610-4.2B	M6-P1.0-6H	610	0.70 ~ 4.20	4.2	9.53	12.96	0.76	30.61	9.50
JRHS4-610-6.6B	M6-P1.0-6H	610	4.20 ~ 6.60	6.6	9.53	12.96	0.76	30.61	9.50
JRHS4-8125-3.8B	M8-P1.25-6H	8125	0.70 ~ 3.80	3.8	12.70	16.64	0.89	37.08	12.70
JRHS4-8125-7.9B	M8-P1.25-6H	8125	3.80 ~ 7.90	7.9	12.70	16.64	0.89	37.08	12.70
JRHS4-1015-3.8B	M10-P1.5-6H	1015	0.70 ~ 3.80	3.8	12.70	16.64	0.89	37.08	12.70
JRHS4-1015-7.9B	M10-P1.5-6H	1015	3.80 ~ 7.90	7.9	12.70	16.64	0.89	37.08	12.70

Finish Code Number

- 1= Plain + Oil
- 2= Passivate
- 3= Cr+3 Zinc Plate Clear 8um + Wax
- 4= Cr+3 Zinc Plate Yellow 8um + Wax WR>96

Material Code Number

- A= Aluminum 5056
- B= Brass C260
- C= Stainless Steel 302HQ
- S= Steel C1008



All dimensions are in inches.

Part Number	Thread Size	Thread Call	Grip Range	Grip Call	Hole Size +0.006/0	ϕHD	HT	L	ϕD
JROS4-632-80	#6-32 UNC-2B	632	0.020 ~ 0.080	80	0.250	0.295	0.018	0.385	0.249
JROS4-832-80	#8-32 UNC-2B	832	0.020 ~ 0.080	80	0.250	0.295	0.018	0.385	0.249
JROS4-1024-130	#10-24 UNC-2B	1024	0.020 ~ 0.130	130	0.281	0.320	0.020	0.440	0.280
JROS4-1032-130	#10-32 UNF-2B	1032	0.020 ~ 0.130	130	0.281	0.320	0.020	0.440	0.280
JROS4-420-165	1/4-20 UNC-2B	420	0.030 ~ 0.165	165	0.375	0.425	0.022	0.580	0.374
JROS4-518-200	5/16-18 UNC-2B	518	0.040 ~ 0.200	200	0.500	0.560	0.022	0.690	0.499
JROS4-616-200	3/8-16 UNC-2B	616	0.040 ~ 0.200	200	0.500	0.560	0.022	0.690	0.499

All dimensions are in millimeters.

Part Number	Thread Size	Thread Call	Grip Range	Grip Call	Hole Size +0.006/0	ϕHD	HT	L	ϕD
JROS4-470-2.0	M4-P0.7-6H	470	0.50 ~ 2.00	2.0	6.40	7.49	0.46	9.78	6.32
JROS4-580-3.3	M5-P0.8-6H	580	0.50 ~ 3.30	3.3	7.20	8.13	0.51	11.18	7.11
JROS4-610-4.2	M6-P1.0-6H	610	0.76 ~ 4.20	4.2	9.60	10.80	0.56	14.73	9.50
JROS4-8125-5.1	M8-P1.25-6H	8125	1.02 ~ 5.10	5.1	12.70	14.22	0.56	17.53	12.67
JROS4-1015-5.1	M10-P1.5-6H	1015	1.02 ~ 5.10	5.1	12.70	14.22	0.56	17.53	12.67

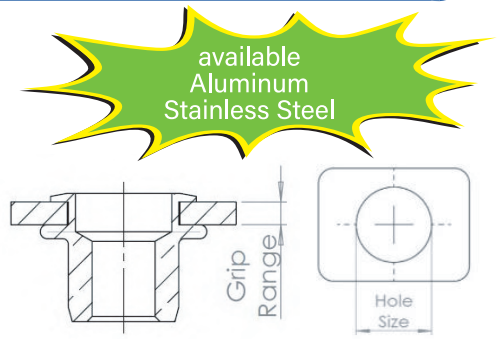
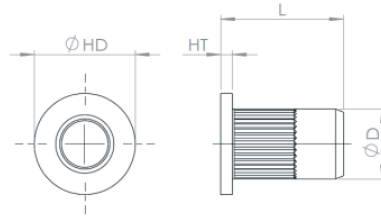
Finish Code Number

- 1= Plain + Oil
- 2= Passivate
- 3= Cr+3 Zinc Plate Clear 8um + Wax
- 4= Cr+3 Zinc Plate Yellow 8um + Wax WR>96

Material Code Number

- A= Aluminum 5056
- B= Brass C260
- C= Stainless Steel 302HQ
- S= Steel C1008

JUNHAI® THIN FLANGE KNURLED BODY



All dimensions are in millimeters.

Part Number	Thread Size	Thread Call	Grip Range	Grip Call	Hole Size +0.10/-0	ϕHD	HT	L	ϕD Max.
JRFKS3-350-1.0	M3-P0.5-6H	350	0.50 ~ 1.00	1.0	5.00	7.00	1.00	8.80	5.00
JRFKS3-350-2.5	M3-P0.5-6H	350	1.75 ~ 2.50	2.5	5.00	7.00	1.00	10.40	5.00
JRFKS3-470-3.0	M4-P0.7-6H	470	0.50 ~ 3.00	3.0	6.00	9.00	1.00	11.00	6.00
JRFKS3-470-3.3	M4-P0.7-6H	470	2.50 ~ 3.25	3.3	6.00	9.00	1.00	11.60	6.00
JRFKS3-580-3.0	M5-P0.8-6H	580	0.50 ~ 3.00	3.0	7.00	10.00	1.00	12.75	7.00
JRFKS3-580-4.0	M5-P0.8-6H	580	3.00 ~ 4.00	4.0	7.00	10.00	1.00	14.70	7.00
JRFKS3-610-3.0	M6-P1.0-6H	610	0.50 ~ 3.00	3.0	9.00	13.00	1.50	14.30	9.00
JRFKS3-610-5.5	M6-P1.0-6H	610	3.00 ~ 5.50	5.5	9.00	13.00	1.50	16.90	9.00
JRFKS3-8125-3.0	M8-P1.25-6H	8125	0.50 ~ 3.00	3.0	11.00	16.00	1.50	17.70	11.00
JRFKS3-8125-5.5	M8-P1.25-6H	8125	3.00 ~ 5.50	5.5	11.00	16.00	1.50	20.40	11.00
JRFKS3-1015-3.5	M10-P1.5-6H	1015	0.70 ~ 3.50	3.5	13.00	19.00	2.00	21.80	13.00
JRFKS3-1015-4.5	M10-P1.5-6H	1015	3.00 ~ 4.50	4.5	13.00	19.00	2.00	24.00	13.00

All dimensions are in millimeters.

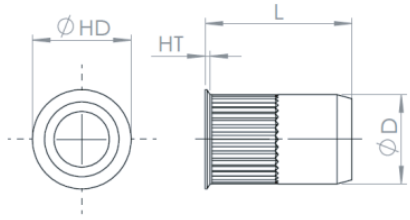
Part Number	Thread Size	Thread Call	Grip Range	Grip Call	Hole Size +0.10/-0	ϕHD	HT	L	ϕD
JRFKS3-470-3.0B	M4-P0.7-6H	470	0.50 ~ 3.00	3.0	6.00	9.00	1.00	15.80	6.00
JRFKS3-470-3.3B	M4-P0.7-6H	470	2.50 ~ 3.30	3.3	6.00	9.00	1.00	16.60	6.00
JRFKS3-580-3.0B	M5-P0.8-6H	580	0.50 ~ 3.00	3.0	7.00	10.00	1.00	19.80	7.00
JRFKS3-580-4.0B	M5-P0.8-6H	580	3.00 ~ 4.00	4.0	7.00	10.00	1.00	21.00	7.00
JRFKS3-610-3.0B	M6-P1.0-6H	610	0.50 ~ 3.00	3.0	9.00	13.00	1.50	21.50	9.00
JRFKS3-610-5.5B	M6-P1.0-6H	610	3.00 ~ 5.50	5.5	9.00	13.00	1.50	25.20	9.00
JRFKS3-8125-3.0B	M8-P1.25-6H	8125	0.50 ~ 3.00	3.0	11.00	16.00	1.50	26.50	11.00
JRFKS3-8125-5.5B	M8-P1.25-6H	8125	3.00 ~ 5.50	5.5	11.00	16.00	1.50	27.80	11.00
JRFKS3-1015-3.5B	M10-P1.5-6H	1015	0.70 ~ 3.50	3.5	13.00	19.00	2.00	30.80	13.00
JRFKS3-1015-4.5B	M10-P1.5-6H	1015	3.00 ~ 4.50	4.5	13.00	19.00	2.00	32.30	13.00

Finish Code Number

- 1= Plain + Oil
- 2= Passivate
- 3= Cr+3 Zinc Plate Clear 8um + Wax
- 4= Cr+3 Zinc Plate Yellow 8um + Wax WR>96

Material Code Number

- A= Aluminum 5056
- B= Brass C260
- C= Stainless Steel 302HQ
- S= Steel C1008



All dimensions are in millimeters.

Part Number	Thread Size	Thread Call	Grip Range	Grip Call	Hole Size +0.10/-0	φHD	HT	L	φD Max.
JRTKS3-350-2.0	M3-P0.5-6H	350	0.50 ~ 2.00	2.0	5.00	5.70	0.30	9.00	5.00
JRTKS3-350-3.0	M3-P0.5-6H	350	1.50 ~ 3.00	3.0	5.00	5.70	0.30	9.80	5.00
JRTKS3-470-3.0	M4-P0.7-6H	470	0.50 ~ 3.00	3.0	6.00	6.60	0.50	10.70	6.00
JRTKS3-470-4.0	M4-P0.7-6H	470	2.50 ~ 4.00	4.0	6.00	6.60	0.50	11.90	6.00
JRTKS3-580-3.0	M5-P0.8-6H	580	0.50 ~ 3.00	3.0	7.00	7.60	0.50	12.75	7.00
JRTKS3-580-4.0	M5-P0.8-6H	580	2.50 ~ 4.00	4.0	7.00	7.60	0.50	13.80	7.00
JRTKS3-610-3.0	M6-P1.0-6H	610	0.50 ~ 3.00	3.0	9.00	10.00	0.60	13.80	9.00
JRTKS3-610-4.5	M6-P1.0-6H	610	3.00 ~ 4.50	4.5	9.00	10.00	0.60	15.30	9.00
JRTKS3-8125-3.0	M8-P1.25-6H	8125	0.50 ~ 3.00	3.0	11.00	12.00	0.60	17.25	11.00
JRTKS3-8125-4.5	M8-P1.25-6H	8125	3.00 ~ 4.50	4.5	11.00	12.00	0.60	18.90	11.00
JRTKS3-1015-3.5	M10-P1.5-6H	1015	0.70 ~ 3.50	3.5	13.00	14.00	0.60	20.75	13.00
JRTKS3-1015-4.5	M10-P1.5-6H	1015	3.00 ~ 4.50	4.5	13.00	14.00	0.60	21.90	13.00

All dimensions are in millimeters.

Part Number	Thread Size	Thread Call	Grip Range	Grip Call	Hole Size +0.10/-0	φHD	HT	L	φD
JRTKS3-470-3.0B	M4-P0.7-6H	470	0.50 ~ 3.00	3.0	6.00	6.60	0.50	17.70	6.00
JRTKS3-470-4.0B	M4-P0.7-6H	470	2.50 ~ 4.00	4.0	6.00	6.60	0.50	16.90	6.00
JRTKS3-580-3.0B	M5-P0.8-6H	580	0.50 ~ 3.00	3.0	7.00	7.60	0.50	18.20	7.00
JRTKS3-580-4.0B	M5-P0.8-6H	580	2.50 ~ 4.00	4.0	7.00	7.60	0.50	19.80	7.00
JRTKS3-610-3.0B	M6-P1.0-6H	610	0.50 ~ 3.00	3.0	9.00	10.00	0.60	21.30	9.00
JRTKS3-610-4.5B	M6-P1.0-6H	610	3.00 ~ 4.50	4.5	9.00	10.00	0.60	20.30	9.00
JRTKS3-8125-3.0B	M8-P1.25-6H	8125	0.50 ~ 3.00	3.0	11.00	12.00	0.60	23.30	11.00
JRTKS3-8125-4.5B	M8-P1.25-6H	8125	3.00 ~ 4.50	4.5	11.00	12.00	0.60	24.90	11.00
JRTKS3-1015-3.0B	M10-P1.5-6H	1015	0.50 ~ 3.00	3.0	13.00	14.00	0.60	28.30	13.00
JRTKS3-1015-4.5B	M10-P1.5-6H	1015	3.00 ~ 4.50	4.5	13.00	14.00	0.60	29.90	13.00

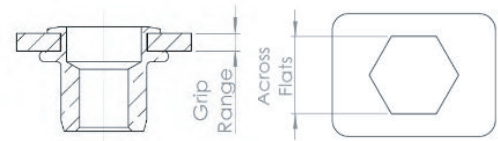
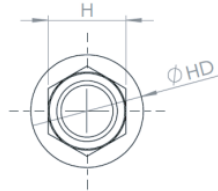
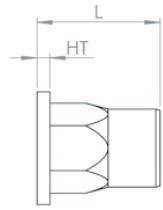
Finish Code Number

- 1= Plain + Oil
- 2= Passivate
- 3= Cr+3 Zinc Plate Clear 8um + Wax
- 4= Cr+3 Zinc Plate Yellow 8um + Wax WR>96

Material Code Number

- A= Aluminum 5056
- B= Brass C260
- C= Stainless Steel 302HQ
- S= Steel C1008

JUNHAI® FLAT FLANGE SEMI HEX BODY



available
Aluminum
Stainless Steel

All dimensions are in millimeters.

Part Number	Thread Size	Thread Call	Grip Range	Grip Call	Across Flats +0.006/0	φHD	HT	L	H Max.
JRFHS3-470-3.0	M4-P0.7-6H	470	0.50 ~ 3.00	3.0	6.00	9.00	1.00	11.00	6.00
JRFHS3-580-3.0	M5-P0.8-6H	580	0.50 ~ 3.00	3.0	7.00	10.00	1.00	13.00	7.00
JRFHS3-610-3.0	M6-P1.0-6H	610	0.50 ~ 3.00	3.0	9.00	13.00	1.50	14.25	9.00
JRFHS3-8125-3.0	M8-P1.25-6H	8125	0.50 ~ 3.00	3.0	11.00	16.00	1.50	18.00	11.00

All dimensions are in millimeters.

Part Number	Thread Size	Thread Call	Grip Range	Grip Call	Across Flats +0.10/-0	φHD	HT	L	H Max.
JRFHS3-470-3.0B	M4-P0.7-6H	470	0.50 ~ 3.00	3.0	6.00	9.00	1.00	15.50	6.00
RTFHS3-580-3.0B	M5-P0.8-6H	580	0.50 ~ 3.00	3.0	7.00	10.00	1.00	19.60	7.00
JRFHS3-610-3.0B	M6-P1.0-6H	610	0.50 ~ 3.00	3.0	9.00	13.00	1.50	22.30	9.00
JRFHS3-8125-3.0B	M8-P1.25-6H	8125	0.50 ~ 3.00	3.0	11.00	16.00	1.50	26.10	11.00

Finish Code Number

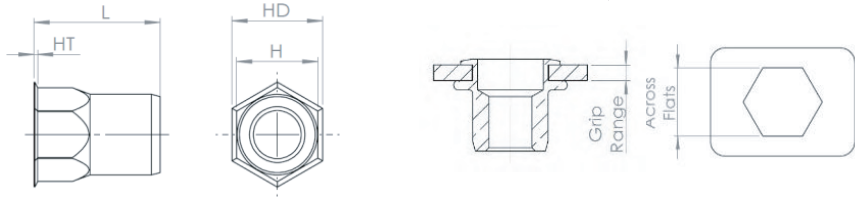
- 1= Plain + Oil
- 2= Passivate
- 3= Cr+3 Zinc Plate Clear 8um + Wax
- 4= Cr+3 Zinc Plate Yellow 8um + Wax WR>96

Material Code Number

- A= Aluminum 5056
- B= Brass C260
- C= Stainless Steel 302HQ
- S= Steel C1008



available
Aluminum
Stainless Steel



All dimensions are in millimeters.

Part Number	Thread Size	Thread Call	Grip Range	Grip Call	Across Flats +0.006/0	HD	HT	L	H Max.
JRTHS3-470-2.0	M4-P0.7-6H	470	0.50 ~ 2.00	2.0	6.00	6.70	0.30	10.70	6.00
JRTHS3-580-3.0	M5-P0.8-6H	580	0.50 ~ 3.00	3.0	7.00	7.90	0.30	13.00	7.00
JRTHS3-610-3.0	M6-P1.0-6H	610	0.50 ~ 3.00	3.0	9.00	9.80	0.40	13.75	9.00
JRTHS3-8125-3.0	M8-P1.25-6H	8125	0.50 ~ 3.00	3.0	11.00	12.00	0.40	17.25	11.00

All dimensions are in millimeters.

Part Number	Thread Size	Thread Call	Grip Range	Grip Call	Hole Size +0.10/-0	HD	HT	L	H Max.
JRTHS3-470-2.0B	M4-P0.7-6H	470	0.50 ~ 2.00	2.0	6.00	6.70	0.30	15.40	6.00
JRTHS3-580-3.0B	M5-P0.8-6H	580	0.50 ~ 3.00	3.0	7.00	7.90	0.30	17.40	7.00
JRTHS3-610-3.0B	M6-P1.0-6H	610	0.50 ~ 3.00	3.0	9.00	9.80	0.40	20.50	9.00
JRTHS3-8125-3.0B	M8-P1.25-6H	8125	0.50 ~ 3.00	3.0	11.00	12.00	0.40	24.10	11.00

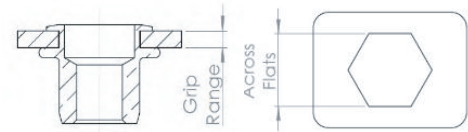
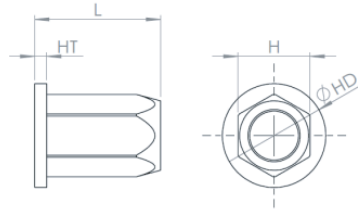
Finish Code Number

- 1= Plain + Oil
- 2= Passivate
- 3= Cr+3 Zinc Plate Clear 8um + Wax
- 4= Cr+3 Zinc Plate Yellow 8um + Wax WR>96

Material Code Number

- A= Aluminum 5056
- B= Brass C260
- C= Stainless Steel 302HQ
- S= Steel C1008

JUNHAI® FLAT FLANGE HEX BODY



All dimensions are in millimeters.

Part Number	Thread Size	Thread Call	Grip Range	Grip Call	Across Flats +0.006/0	φHD	HT	L	H Max.
JRFHHS3-470-2.0	M4-P0.7-6H	470	0.50 ~ 2.00	2.0	6.00	9.00	1.00	9.80	6.00
JRFHHS3-580-3.0	M5-P0.8-6H	580	0.50 ~ 3.00	3.0	7.00	10.00	1.00	13.70	7.00
JRFHHS3-580-4.5	M5-P0.8-6H	580	2.50 ~ 4.50	4.5	7.00	10.00	1.00	14.30	7.00
JRFHHS3-610-3.0	M6-P1.0-6H	610	0.50 ~ 3.00	3.0	9.00	12.90	1.50	15.70	9.00
JRFHHS3-610-5.5	M6-P1.0-6H	610	3.00 ~ 5.50	5.5	9.00	12.90	1.50	18.70	9.00
JRFHHS3-8125-3.0	M8-P1.25-6H	8125	0.50 ~ 3.00	3.0	11.00	16.00	1.50	17.75	11.00
JRFHHS3-8125-5.5	M8-P1.25-6H	8125	3.00 ~ 5.50	5.5	11.00	16.00	1.50	20.75	11.00
JRFHHS3-1015-3.5	M10-P1.5-6H	1015	1.00 ~ 3.50	3.5	13.00	19.00	2.00	22.80	13.00
JRFHHS3-1015-6.0	M10-P1.5-6H	1015	3.50 ~ 6.00	6.0	13.00	19.00	2.00	25.45	13.00
JRFHHS3-12175-4.0	M12-P1.75-6H	12175	1.00 ~ 4.00	4.0	16.00	23.00	2.00	26.80	16.00

All dimensions are in millimeters.

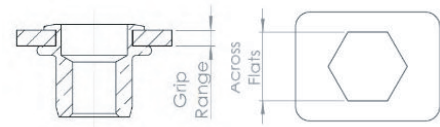
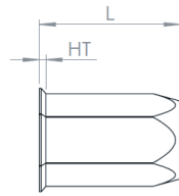
Part Number	Thread Size	Thread Call	Grip Range	Grip Call	Hole Size +0.10/-0	φHD	HT	L	H Max.
JRFHHS3-470-2.0B	M4-P0.7-6H	470	0.50 ~ 2.00	2.0	6.00	9.00	1.00	14.80	6.00
JRFHHS3-580-3.0B	M5-P0.8-6H	580	0.50 ~ 3.00	3.0	7.00	10.00	1.00	19.70	7.00
JRFHHS3-610-3.0B	M6-P1.0-6H	610	0.50 ~ 3.00	3.0	9.00	12.90	1.50	22.80	9.00
JRFHHS3-8125-3.0B	M8-P1.25-6H	8125	0.50 ~ 3.00	3.0	11.00	16.00	1.50	25.80	11.00
JRFHHS3-8125-5.5B	M8-P1.25-6H	8125	3.00 ~ 5.50	5.5	11.00	16.00	1.50	28.70	11.00
JRFHHS3-1015-3.5B	M10-P1.5-6H	1015	1.00 ~ 3.50	3.5	13.00	19.00	2.00	32.75	13.00

Finish Code Number

- 1= Plain + Oil
- 2= Passivate
- 3= Cr+3 Zinc Plate Clear 8um + Wax
- 4= Cr+3 Zinc Plate Yellow 8um + Wax WR>96

Material Code Number

- A= Aluminum 5056
- B= Brass C260
- C= Stainless Steel 302HQ
- S= Steel C1008



All dimensions are in millimeters.

Part Number	Thread Size	Thread Call	Grip Range	Grip Call	Across Flats +0.006/0	HD	HT	L	H Max.
JRTHHS3-470-2.0	M4-P0.7-6H	470	0.50 ~ 2.00	2.0	6.00	6.50	0.40	10.80	6.00
JRTHHS3-580-3.0	M5-P0.8-6H	580	0.50 ~ 3.00	3.0	7.00	7.85	0.45	13.80	7.00
JRTHHS3-580-4.5	M5-P0.8-6H	580	2.50 ~ 4.50	4.5	7.00	7.85	0.45	16.50	7.00
JRTHHS3-610-3.0	M6-P1.0-6H	610	0.50 ~ 3.00	3.0	9.00	9.95	0.45	16.20	9.00
JRTHHS3-610-5.5	M6-P1.0-6H	610	3.00 ~ 5.50	5.5	9.00	9.95	0.45	19.25	9.00
JRTHHS3-8125-3.0	M8-P1.25-6H	8125	0.50 ~ 3.00	3.0	11.00	11.75	0.50	17.80	11.00
JRTHHS3-8125-5.5	M8-P1.25-6H	8125	3.00 ~ 5.50	5.5	11.00	11.75	0.50	20.80	11.00
JRTHHS3-1015-3.5	M10-P1.5-6H	1015	1.00 ~ 3.50	3.5	13.00	14.10	0.50	22.00	13.00
JRTHHS3-1015-6.0	M10-P1.5-6H	1015	3.50 ~ 6.00	6.0	13.00	14.10	0.50	25.00	13.00
JRTHHS3-12175-4.0	M12-P1.75-6H	12175	1.00 ~ 4.00	4.0	16.00	17.60	0.85	24.80	16.00

All dimensions are in millimeters.

Part Number	Thread Size	Thread Call	Grip Range	Grip Call	Hole Size +0.10/-0	HD	HT	L	H Max.
JRTHHS3-470-2.0B	M4-P0.7-6H	470	0.50 ~ 2.00	2.0	6.00	65.00	0.40	17.10	6.00
JRTHHS3-580-3.0B	M5-P0.8-6H	580	0.50 ~ 3.00	3.0	7.00	7.85	0.45	20.20	7.00
JRTHHS3-610-3.5B	M6-P1.0-6H	610	0.50 ~ 3.00	3.5	9.00	9.95	0.45	23.20	9.00
JRTHHS3-8125-3.5B	M8-P1.25-6H	8125	0.50 ~ 3.00	3.5	11.00	11.75	0.60	28.30	11.00
JRTHHS3-8125-6.0B	M8-P1.25-6H	8125	3.00 ~ 6.00	6.0	11.00	11.75	0.60	30.50	11.00
JRTHHS3-1015-3.5B	M10-P1.5-6H	1015	1.00 ~ 3.50	3.5	13.00	14.10	0.90	32.05	13.00

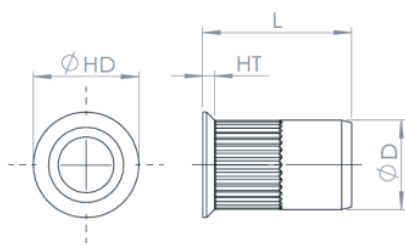
Finish Code Number

- 1= Plain + Oil
- 2= Passivate
- 3= Cr+3 Zinc Plate Clear 8um + Wax
- 4= Cr+3 Zinc Plate Yellow 8um + Wax WR>96

Material Code Number

- A= Aluminum 5056
- B= Brass C260
- C= Stainless Steel 302HQ
- S= Steel C1008

JUNHAI® COUNTERSUNK FLANGE KNURLED BODY



All dimensions are in millimeters.

Part Number	Thread Size	Thread Call	Grip Range	Grip Call	Hole Size +0.10/-0	ϕHD	HT	L	ϕD Max.
JRCKS3-350-1.7	M3-P0.5-6H	350	1.00 ~ 1.75	1.7	5.00	7.00	1.10	8.80	5.00
JRCKS3-350-2.5	M3-P0.5-6H	350	1.75 ~ 2.50	2.5	5.00	7.00	1.10	9.60	5.00
JRCKS3-470-1.7	M4-P0.7-6H	470	1.00 ~ 1.75	1.7	6.00	8.00	1.10	9.20	6.00
JRCKS3-470-2.5	M4-P0.7-6H	470	1.75 ~ 2.50	2.5	6.00	8.00	1.10	10.00	6.00
JRCKS3-580-3.0	M5-P0.8-6H	580	1.50 ~ 3.00	3.0	7.00	9.00	1.10	12.70	7.00
JRCKS3-580-4.0	M5-P0.8-6H	580	3.00 ~ 4.00	4.0	7.00	9.00	1.10	13.80	7.00
JRCKS3-610-3.0	M6-P1.0-6H	610	1.50 ~ 3.00	3.0	9.00	10.60	1.30	15.00	9.00
JRCKS3-610-4.5	M6-P1.0-6H	610	3.00 ~ 4.50	4.5	9.00	10.60	1.30	16.60	9.00
JRCKS3-8125-3.0	M8-P1.25-6H	8125	1.50 ~ 3.00	3.0	11.00	13.60	1.50	16.50	11.00
JRCKS3-8125-4.5	M8-P1.25-6H	8125	3.00 ~ 4.50	4.5	11.00	13.60	1.50	18.10	11.00
JRCKS3-1015-3.0	M10-P1.5-6H	1015	1.50 ~ 3.00	3.0	13.00	16.00	1.50	20.40	13.00
JRCKS3-1015-4.5	M10-P1.5-6H	1015	3.00 ~ 4.50	4.5	13.00	16.00	1.50	22.00	13.00

All dimensions are in millimeters.

Part Number	Thread Size	Thread Call	Grip Range	Grip Call	Hole Size +0.10/-0	ϕHD	HT	L	ϕD
JRCKS3-470-1.7B	M4-P0.7-6H	470	1.00 ~ 1.75	1.7	6.00	8.00	1.10	14.20	6.00
JRCKS3-470-2.5B	M4-P0.7-6H	470	1.75 ~ 2.50	2.5	6.00	8.00	1.10	15.00	6.00
JRCKS3-580-3.0B	M5-P0.8-6H	580	2.00 ~ 3.00	3.0	7.00	9.00	1.10	18.80	7.00
JRCKS3-580-4.0B	M5-P0.8-6H	580	3.00 ~ 4.00	4.0	7.00	9.00	1.10	19.90	7.00
JRCKS3-610-3.0B	M6-P1.0-6H	610	1.50 ~ 3.00	3.0	9.00	10.60	1.30	22.00	9.00
JRCKS3-610-4.5B	M6-P1.0-6H	610	3.00 ~ 4.50	4.5	9.00	10.60	1.30	23.60	9.00
JRCKS3-8125-3.0B	M8-P1.25-6H	8125	1.50 ~ 3.00	3.0	11.00	13.60	1.50	24.80	11.00
JRCKS3-8125-4.5B	M8-P1.25-6H	8125	3.00 ~ 4.50	4.5	11.00	13.60	1.50	26.40	11.00
JRCKS3-1015-3.0B	M10-P1.5-6H	1015	1.50 ~ 3.00	3.0	13.00	16.00	1.50	30.30	13.00
JRCKS3-1015-4.5B	M10-P1.5-6H	1015	3.00 ~ 4.50	4.5	13.00	16.00	1.50	31.90	13.00

Finish Code Number

- 1= Plain + Oil
- 2= Passivate
- 3= Cr+3 Zinc Plate Clear 8um + Wax
- 4= Cr+3 Zinc Plate Yellow 8um + Wax WR>96

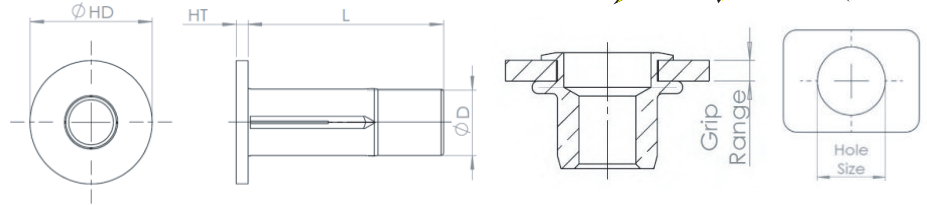
Material Code Number

- A= Aluminum 5056
- B= Brass C260
- C= Stainless Steel 302HQ
- S= Steel C1008

JR JUNHAI® LARGE FLANGE STRAIGHT SLOTTED BODY



available
Aluminum
Stainless Steel



All dimensions are in inches.

Part Number	Thread Size	Thread Call	Grip Range	Grip Call	Hole Size +0.006/0	φHD	HT	L	φD
JRPNS4-1024-175	#10-24 UNC-2B	1024	0.020 ~ 0.175	175	0.273	0.500	0.038	0.781	0.272
JRPNS4-1024-320	#10-24 UNC-2B	1024	0.175 ~ 0.320	320	0.273	0.500	0.038	0.921	0.272
JRPNS4-1032-175	#10-32 UNF-2B	1032	0.020 ~ 0.175	175	0.273	0.500	0.038	0.781	0.272
JRPNS4-1032-320	#10-32 UNF-2B	1032	0.175 ~ 0.320	320	0.273	0.500	0.038	0.921	0.272
JRPNS4-420-280	1/4-20 UNC-2B	420	0.020 ~ 0.280	280	0.347	0.625	0.057	1.000	0.346
JRPNS4-420-500	1/4-20 UNC-2B	420	0.280 ~ 0.500	500	0.347	0.625	0.057	1.234	0.346
JRPNS4-518-280	5/16-18 UNC-2B	518	0.020 ~ 0.280	280	0.438	0.750	0.062	1.141	0.437
JRPNS4-518-500	5/16-18 UNC-2B	518	0.280 ~ 0.500	500	0.438	0.750	0.062	1.375	0.437
JRPNS4-616-280	3/8-16 UNC-2B	616	0.020 ~ 0.280	280	0.515	0.875	0.088	1.218	0.514
JRPNS4-616-500	3/8-16 UNC-2B	616	0.280 ~ 0.500	500	0.515	0.875	0.088	1.437	0.514

All dimensions are in millimeters.

Part Number	Thread Size	Thread Call	Grip Range	Grip Call	Hole Size +0.10/-0	φHD	HT	L	φD
JRPNS4-580-4.45	M5-P0.8-6H	580	0.50 ~ 4.45	4.45	7.48	12.70	0.96	21.03	7.47
JRPNS4-580-8.1	M5-P0.8-6H	580	4.45 ~ 8.1	8.1	7.48	12.70	0.96	23.80	7.47
JRPNS4-610-7.1	M6-P1.0-6H	610	0.50 ~ 7.1	7.1	8.80	15.87	1.50	25.40	8.79
JRPNS4-610-12.7	M6-P1.0-6H	610	7.10 ~ 12.7	12.7	8.80	15.87	1.50	31.32	8.79
JRPNS4-8125-7.1	M8-P1.25-6H	8125	0.50 ~ 7.1	7.1	11.11	19.04	1.57	28.95	11.10
JRPNS4-8125-12.7	M8-P1.25-6H	8125	7.10 ~ 12.7	12.7	11.11	19.04	1.57	34.90	11.10
JRPNS4-1015-7.1	M10-P1.5-6H	1015	0.50 ~ 7.1	7.1	13.07	22.23	2.24	30.94	13.06
JRPNS4-1015-12.7	M10-P1.5-6H	1015	7.10 ~ 12.7	12.7	13.07	22.23	2.24	36.50	13.06

Finish Code Number

- 1= Plain + Oil
- 2= Passivate
- 3= Cr+3 Zinc Plate Clear 8um + Wax
- 4= Cr+3 Zinc Plate Yellow 8um + Wax WR>96

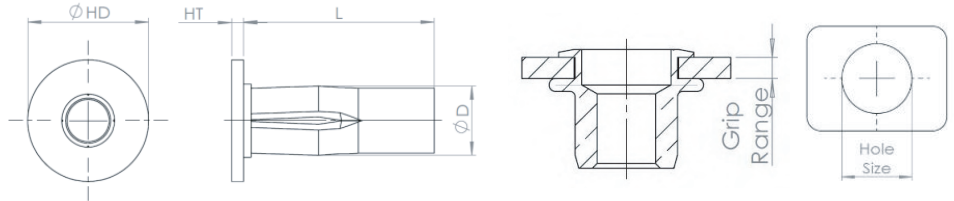
Material Code Number

- A= Aluminum 5056
- B= Brass C260
- C= Stainless Steel 302HQ
- S= Steel C1008

JUNHAI® LARGE FLANGE PREBULBED SLOTTED BODY JR



available
Aluminum
Stainless Steel



All dimensions are in inches.

Part Number	Thread Size	Thread Call	Grip Range	Grip Call	Hole Size +0.006/0	φHD	HT	L	φD
JRPBS4-1024-175	#10-24 UNC-2B	1024	0.020 ~ 0.175	175	0.336	0.500	0.038	0.781	0.329
JRPBS4-1024-320	#10-24 UNC-2B	1024	0.175 ~ 0.320	320	0.336	0.500	0.038	0.921	0.329
JRPBS4-1032-175	#10-32 UNF-2B	1032	0.020 ~ 0.175	175	0.336	0.500	0.038	0.781	0.329
JRPBS4-1032-320	#10-32 UNF-2B	1032	0.175 ~ 0.320	320	0.336	0.500	0.038	0.921	0.329
JRPBS4-420-280	1/4-20 UNC-2B	420	0.020 ~ 0.280	280	0.390	0.625	0.057	1.000	0.384
JRPBS4-420-500	1/4-20 UNC-2B	420	0.280 ~ 0.500	500	0.390	0.625	0.057	1.235	0.384
JRPBS4-518-280	5/16-18 UNC-2B	518	0.020 ~ 0.280	280	0.500	0.750	0.062	1.141	0.495
JRPBS4-518-500	5/16-18 UNC-2B	518	0.280 ~ 0.500	500	0.500	0.750	0.062	1.375	0.495
JRPBS4-616-280	3/8-16 UNC-2B	616	0.020 ~ 0.280	280	0.594	0.875	0.088	1.218	0.587
JRPBS4-616-500	3/8-16 UNC-2B	616	0.280 ~ 0.500	500	0.594	0.875	0.088	1.437	0.587

All dimensions are in millimeters.

Part Number	Thread Size	Thread Call	Grip Range	Grip Call	Hole Size +0.10/-0	φHD	HT	L	φD
JRPBS4-580-4.45	M5-P0.8-6H	580	0.50 ~ 4.45	4.45	8.55	12.70	0.96	21.03	8.35
JRPBS4-580-8.1	M5-P0.8-6H	580	4.45 ~ 8.10	8.1	8.55	12.70	0.96	23.80	8.35
JRPBS4-610-7.1	M6-P1.0-6H	610	0.50 ~ 7.10	7.1	10.00	15.88	1.45	25.40	9.80
JRPBS4-610-12.7	M6-P1.0-6H	610	7.10 ~ 12.70	12.7	10.00	15.88	1.45	31.34	9.80
JRPBS4-8125-7.1	M8-P1.25-6H	8125	0.50 ~ 7.10	7.1	12.70	19.05	1.57	29.25	12.57
JRPBS4-8125-12.7	M8-P1.25-6H	8125	7.10 ~ 12.70	12.7	12.70	19.05	1.57	34.93	12.57
JRPBS4-1015-7.1	M10-P1.5-6H	1015	0.50 ~ 7.10	7.1	15.09	22.20	2.24	30.94	14.91
JRPBS4-1015-12.7	M10-P1.5-6H	1015	7.10 ~ 12.70	12.7	15.09	22.20	2.24	36.50	14.91

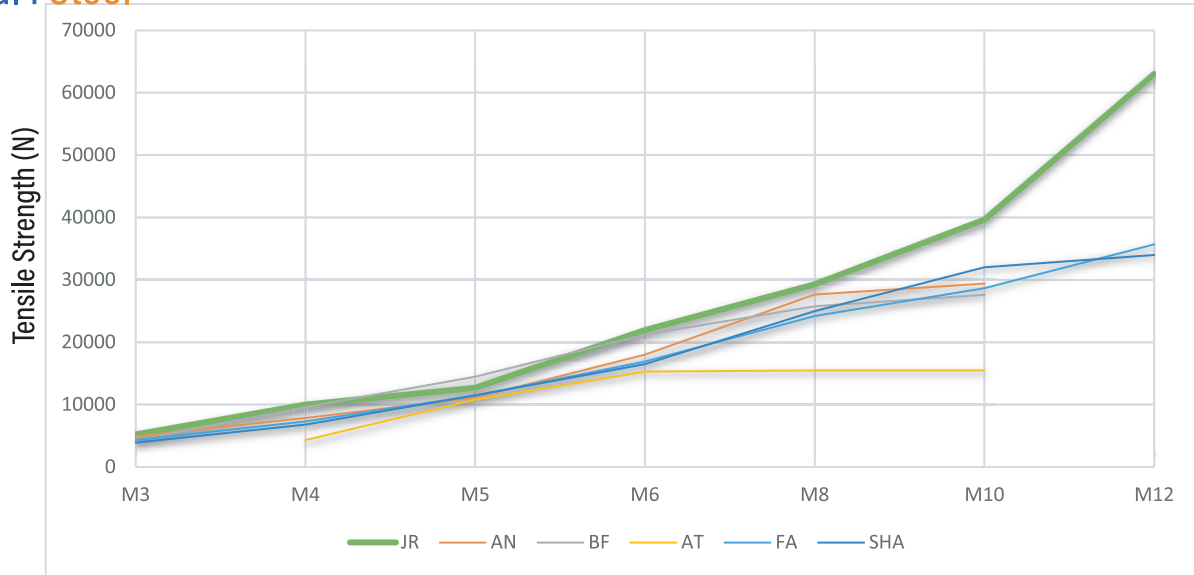
Finish Code Number

- 1= Plain + Oil
- 2= Passivate
- 3= Cr+3 Zinc Plate Clear 8um + Wax
- 4= Cr+3 Zinc Plate Yellow 8um + Wax WR>96

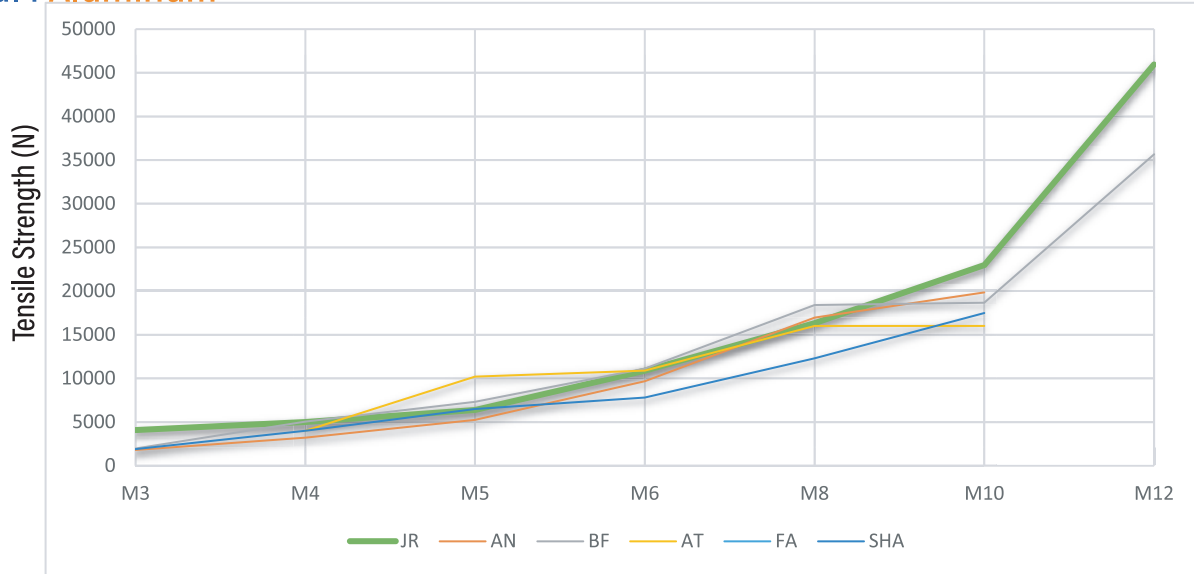
Material Code Number

- A= Aluminum 5056
- B= Brass C260
- C= Stainless Steel 302HQ
- S= Steel C1008

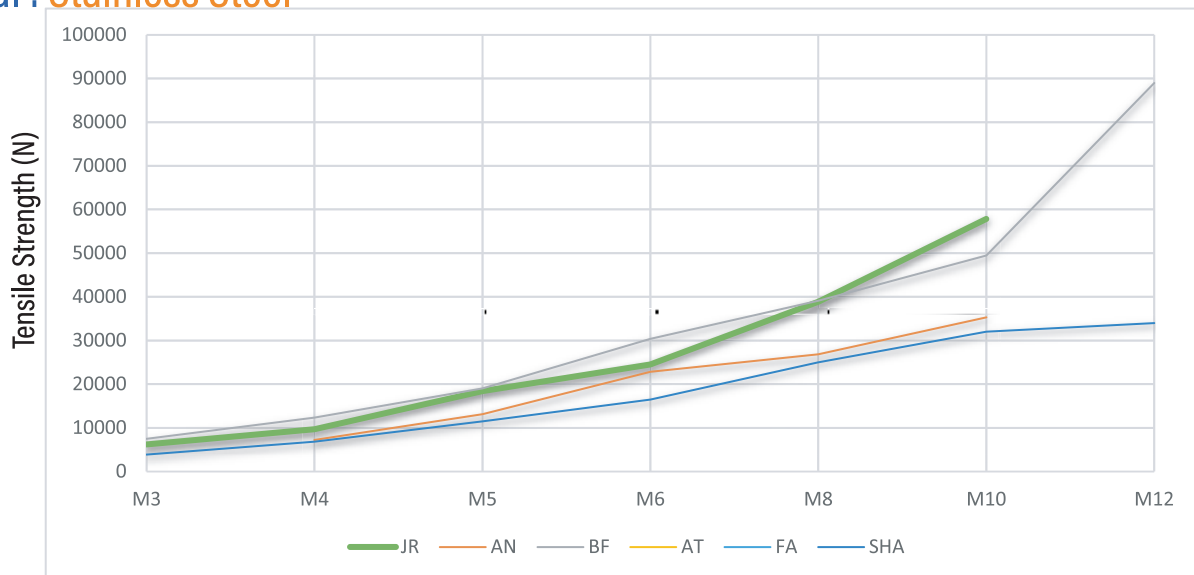
Material : Steel



Material : Aluminum



Material : Stainless Steel



JR L S 8 - 420 - 165 B

B here indicates closed end thread,
Blank is open end.

Grip Range Code:

For parts with Unified threads, the number shown is the max grip in thousands of an inch. For parts with Metric threads, the number shown is the max grip in millimeters.

Thread Code

Finish Code Number:

- 1= Plain + Oil
- 2= Passivate
- 3= Cr+3 Zinc Plate Clear 8um + Wax
- 4= Cr+3 Zinc Plate Yellow 8um + Wax WR>96

Material Code:

- A= Aluminum 5056
- B= Brass C260
- C= Stainless Steel 302HQ
- S= Steel C1008

Head and Shank Type Code

- L= Large flange head, knurled body
- K= Small Flange head, knurled body
- H= Large flange head, semi hex body
- O= Thin flange head, round body
- FK= Flat flange head, knurled body
- TK= Thin flange head, knurled body
- FH= Flat flange head, semi hex body
- TH= Thin flange head, semi hex body
- FHH= Flat flange head, hex body
- THH= Thin flange head, hex body
- CK= CounterSunk flange head, knurled body
- PN= Large flange head, strage slotted body
- PB= Large flange head, prebullid slotted body

All JUNHAI® part numbers begin with JR for **JUNHAI Rivets**.

SERIES 800 AND 900 SPIN-SPIN TOOLS

- Totally pneumatic tool that installs Blind Rivet Nuts into various material thickness.

Series 800 tools

Also available Series 806 tool with adjustable clutch to install #4-40 to 1/4-20 thread sizes.



901 902, 903 and 904 In-line tools



911, 912 and 913 Right angle tools

	Thread Size	Complete Tool Part No. Series 800	Complete Tool Part No. 901, 902 903 & 904	(1) Tool RPM	Air Settings		Nose Assembly Components For Internally Threaded Nuts		
					Fastener Material		Part No. For Complete Nose Assembly	Mandrel Socket Head Cap Screw	Bearing Set (P/N)
					Steel & Brass	Aluminum			
					Dynamic Air Pressure Settings	Dynamic Air Pressure Settings			
PSI	#4-40	801-440	901-440	3000	35 - 45	30 - 40	JRNP-440	440 x 1.50"	JRPB-4
	#6-32	801-632	901-632	3000	70 - 80	60 - 80	JRNP-632	632 x 1.50"	JRPB-6
	#8-32	801-832	901-832	3000	70 - 90	50 - 70	JRNP-832	832 x 1.50"	JRPB-8
	#10-24	802-1024	902-1024	1500	60 - 90	40 - 70	JRNP-1024	1024 x 1.75"	JRPB-10
	#10-32	802-1032	902-1032	1500	60 - 90	40 - 70	JRNP-1032	1032 x 1.75"	JRPB-10
	1/4-20	803-2520	903-2520	600	70 - 90	60 - 80	JRNP-2520	420 x 1.50"	JRPB-25
	1/4-28	803-2528	903-2528	600	70 - 90	60 - 80	JRNP-2528	428 x 1.50"	JRPB-25
	5/16-18	804-3118	904-3118	400	70 - 110	60 - 90	JRNP-3118	518 x 2.00"	JRPB-31
	5/16-24	804-3124	904-3124	400	70 - 110	60 - 90	JRNP-3124	524 x 2.00"	JRPB-31
	3/8-16	804-3716	904-3716	400	70 - 110	60 - 90	JRNP-3716	616 x 2.00"	JRPB-37
	3/8-24	804-3724	904-3724	400	70 - 110	60 - 90	JRNP-3724	624 x 2.00"	JRPB-37
	1/2-13	808-5013	—	275	75 - 120	60 - 90	JRNP-5013	813 x 2.50"	JRPB-50
1/2-20	808-5020	—	275	75 - 120	60 - 90	JRNP-5020	820 x 2.50"	JRPB-50	
BARS	M3	801-M3	901-M3	3000	2.4 - 3.1	2.1 - 2.7	JRNP-M3	M3 x 40mm	JRPB-M3
	M4	801-M4	901-M4	3000	2.4 - 3.1	3.4 - 4.8	JRNP-M4	M4 x 40mm	JRPB-M4
	M5	802-M5	902-M5	1500	4.8 - 5.5	2.7 - 4.8	JRNP-M5	M5 x 45mm	JRPB-M5
	M6	803-M6	903-M6	600	4.1 - 5.5	4.1 - 5.5	JRNP-M6	M6 x 40mm	JRPB-M6
	M8	804-M8	904-M8	400	4.8 - 6.2	4.1 - 6.2	JRNP-M8	M8 x 50mm	JRPB-M8
	M10	804-M10	904-M10	400	4.1 - 7.5	4.1 - 6.2	JRNP-M10	M10 x 50mm	JRPB-M10
	M12	808-M12	—	275	4.1 - 7.5	4.1 - 6.2	JRNP-M12	M12 x 60mm	JRPB-M12

(1) Also available - 900 RPM Series 805 tool.

	Thread Size	Complete Tool Part No. 911, 912 & 913	Tool RPM	Air Settings		Nose Assembly Components For Internally Threaded Nuts		
				Fastener Material		Part No. For Complete Nose Assembly	Mandrel Socket Head Cap Screw	Bearing Set (P/N)
				Steel & Brass	Aluminum			
				Dynamic Air Pressure Settings	Dynamic Air Pressure Settings			
PSI	#4-40	911-440	2200	35 - 45	30 - 40	JRNP-440	440 x 1.50"	JRPB-4
	#6-32	911-632	2200	60 - 80	40 - 70	JRNP-632	632 x 1.50"	JRPB-6
	#8-32	911-832	2200	60 - 90	40 - 70	JRNP-832	832 x 1.50"	JRPB-8
	#10-24	911-1024	2200	60 - 90	40 - 70	JRNP-1024	1024 x 1.75"	JRPB-10
	#10-32	911-1032	2200	60 - 90	40 - 70	JRNP-1032	1032 x 1.75"	JRPB-10
	1/4-20	912-2520	1100	60 - 90	50 - 80	JRNP-2520	420 x 1.50"	JRPB-25
	1/4-28	912-2528	1100	70 - 90	50 - 80	JRNP-2528	428 x 1.50"	JRPB-25
	5/16-18	913-3118	400	70 - 110	60 - 90	JRNP-3118	518 x 2.00"	JRPB-31
	5/16-24	913-3124	400	70 - 110	60 - 90	JRNP-3124	524 x 2.00"	JRPB-31
	3/8-16	913-3716	400	70 - 110	60 - 90	JRNP-3716	616 x 2.00"	JRPB-37
	3/8-24	913-3724	400	70 - 110	60 - 90	JRNP-3724	624 x 2.00"	JRPB-37
	BARS	M3	911-M3	2200	2.4 - 3.1	2.1 - 2.7	JRNP-M3	M3 x 40mm
M4		911-M4	2200	2.4 - 3.1	2.7 - 4.8	JRNP-M4	M4 x 40mm	JRPB-M4
M5		911-M5	2200	4.1 - 5.5	2.7 - 4.8	JRNP-M5	M5 x 45mm	JRPB-M5
M6		912-M6	1100	4.1 - 5.5	4.1 - 5.5	JRNP-M6	M6 x 40mm	JRPB-M6
M8		913-M8	400	4.8 - 6.2	4.1 - 6.2	JRNP-M8	M8 x 50mm	JRPB-M8
	M10	913-M10	400	4.1 - 7.5	4.1 - 6.2	JRNP-M10	M10 x 50mm	JRPB-M10

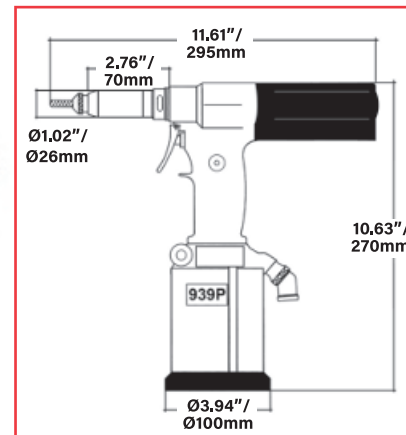
NOTE: The air supplied to the 800 and 900 series tools should be dry and free of contamination to prevent premature wear and tear of the internal components. We suggest use of a filter, pressure regulator, and oiler system to be located in close proximity to the tool. All available thread sizes may not be listed. Contact us for availability. Optional mandrel lengths are also available for all product families. **The air settings reported are suggested guidelines. Adjustments may be necessary for your application.**

RIV939P POWERFUL PULL-TO-PRESSURE TOOL FOR RIVET NUTS UP TO M12



The RIV939P pull-to-pressure tool has a 13% faster spin on speed and a 29% faster spin off speed than the previous tool.

- Pressure controlled setting allows the installation of the same insert into various material thickness without any adjustment of the tool.
- Pull-to-pressure feature extends mandrel life.
- Mandrel is a hardened socket head cap screw which is easy to replace when necessary.
- The auto-reverse feature after installation increases production rate.
- Eliminates over installing and double installing ensuring fastener thread integrity.



Air pressure regulator.

RIV939P (4843900 tool only) nose pieces sold separately.

RIV939P-UN (unified kit) includes a gun and tooling to install thread sizes #6-32, #8-32, #10-32, 1/4-20, 5/16-18 and 3/8-16.

RIV939P-MT (metric kit) includes a gun and tooling to install thread sizes M4 through M10.

Tool Specifications

	Thread Sizes	Weight ⁽¹⁾	Air ⁽²⁾	Air Use	Tool Speed	Minimum Hose Size I.D.	Max. Axial Pulling Load	Max. Stroke
	#4 to 3/8" (female threaded inserts) #8 to 5/16" (male threaded inserts)	4.85 lbs.	90 PSI	305 cu. in.	2250 rpm @ 95 PSI	3/8"	5980 lbs. @ 90 PSI	.256"
	M3 to M10 (female threaded inserts) M4 to M8 (male threaded inserts)	2.2 kg.	6 BAR	5 liters	2250 rpm @ 6.5 BAR	9.5 mm	26.6 kN @ 6 BAR	6.5 mm

(1) Without nose piece.

(2) Dynamic air pressure for unified tool is 70 to 100 PSI and 5 to 7 BAR for the metric tool. Do not exceed these values or tool can be damaged. The use of a pressure regulator is recommended.

UNIFIED NOSE ASSEMBLY PART NUMBERS

Thread Size	Part No. For Complete Insert Nose Assembly	Part No. For Complete Stud Nose Assembly	Mandrel Socket Head Cap Screw
#4-40	4326700	—	4-40 x 1.25"
#6-32	3755100	—	6-32 x 1.5"
#8-32	3755500	4361900	8-32 x 1.5"
#10-24	3755900 (3)	4555100	10-24 x 2.25"
#10-32	3755900	4362000	10-32 x 2.25"
1/4-20	3756100	4362100	1/4-20 x 2.25"
1/4-28	3756100 (3)	—	1/4-28 x 2.25"
5/16-18	3756300	4362200	5/16-18 x 2.25"
5/16-24	3756300 (3)	—	5/16-24 x 2.25"
3/8-16	3756700	4772500	3/8-16 x 2.5"
3/8-24	—	—	3/8-24 x 2.5"

(3) Use this nose assembly with properly sized socket head cap screw.

METRIC NOSE ASSEMBLY PART NUMBERS

Thread Size	Part No. For Complete Insert Nose Assembly	Part No. For Complete Stud Nose Assembly	Mandrel Socket Head Cap Screw
M3	3441100	—	M3 x 35
M4	3441200	3442300	M4 x 50
M5	3441300	3442400	M5 x 55
M6	3441400	3442500	M6 x 55
M8	3441500	3442600	M8 x 60
M10	3441600	4601900	M10 x 65
M12	2441700	—	M12 x 65

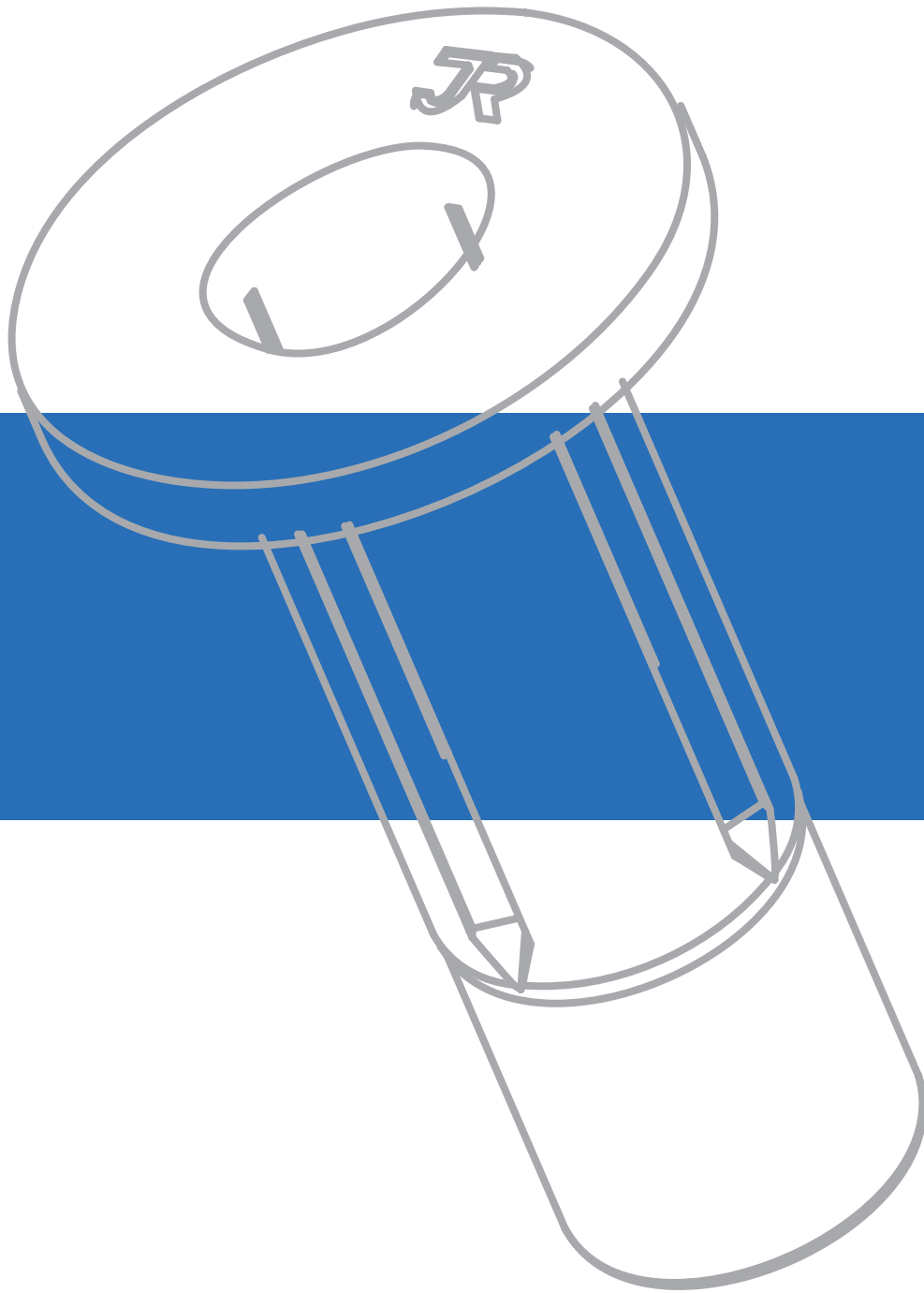
Available on request



Anti-scratch wing protection Part Number 4217600.



Security cap for air pressure regulator Part Number FE-TS-938-SC-S



JUNHAI

14F., No. 789, Chuangxin Rd., Nanzi Dist., Kaohsiung City 81164, Taiwan

TEL : +886-7-353-9818

FAX : +886-7-353-9810

E-mail : service@a-junhai.com

Visit our Web at <https://www.a-junhai.com>



All JUNHAI products meet our stringent quality standards. If you require additional industry or other specific quality certifications, special procedures and/or part numbers are required. Please contact us for further information.